

Modular walls

## 1.1 High pressure laminate panel ( HPL )

( Art. Cod. W-LAMPO - W-LAMRW - W-LAMHC )



Thickness  
48 mm



Maximum sizes  
Width 1286 mm, Height 3030



Minimum sizes  
Width 90 mm, Height 90

Standard colors



Colors on request



Palette colors

## 1.2 Prepainted aluminum panel

( Art. Cod. W-ALLPO - W-ALLRW - W-ALLHC )



Thickness  
48 mm

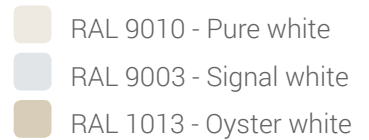


Maximum sizes  
Width 1240 mm, Height 2990



Minimum sizes  
Width 90 mm, Height 90

Standard colors



Colors on request



RAL palette colors

## 1.3 Galvanized steel panel ( Metal )

( Art. Cod. W-FERPO - W-FERRW - W-FERHC )



Thickness  
48 mm

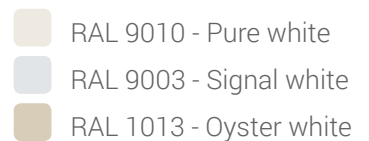


Maximum sizes  
Width 1240 mm, Height 2990



Minimum sizes  
Width 90 mm, Height 90

Standard colors



Colors on request



RAL palette colors

## 1.4 Raw aluminum panel to cover by PVC

( Art. Cod. W-ALLGRPO - W-ALLGRRW - W-ALLGRHC )



Thickness  
48 mm



Maximum sizes  
Width 1240 mm, Height 2990



Minimum sizes  
Width 90 mm, Height 90

Finishing

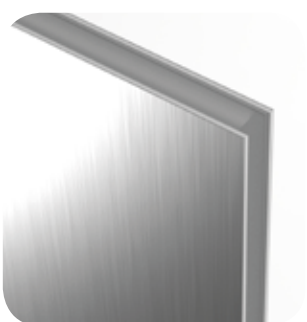


PVC cover

PVC cover is not Delta's scope

## 1.5 Stainless steel panel

( Art. Cod. W-INOPO - W-INORW - W-INOHC )



Thickness  
48 mm



Maximum sizes  
Width 1250 mm, Height 2990



Minimum sizes  
Width 90 mm, Height 90

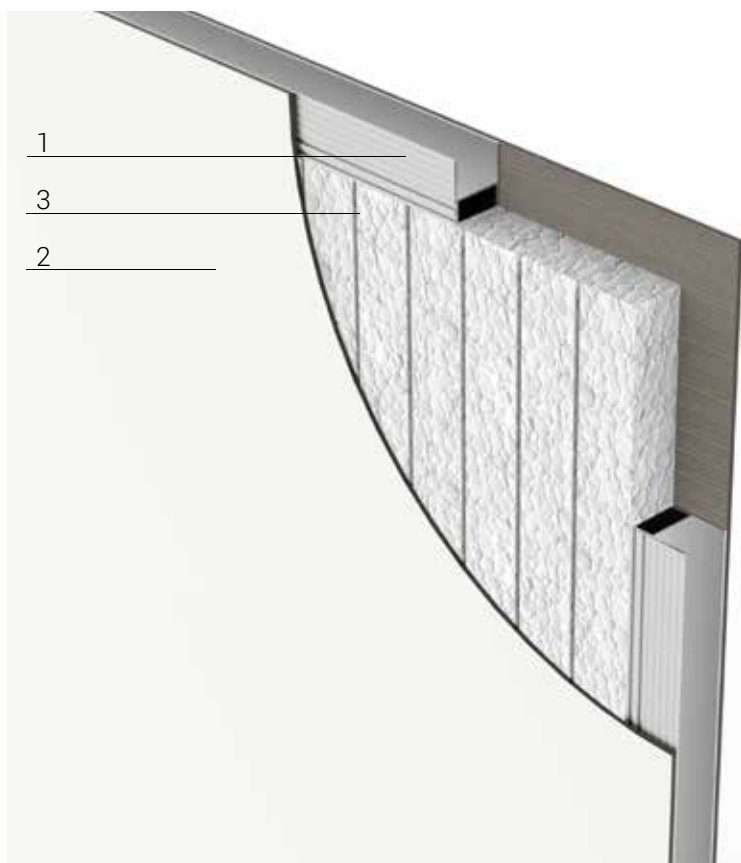
Finishing



## 1.1.1 High pressure laminate panel ( HPL )

Internal insulation **Polystyrene**

art. cod. W-LAMPO



### Description

1. Internal extruded aluminum frame thick. 2 mm
2. External coating by high pressure laminate (th. 4 mm)
3. Internal insulation **polystyrene**

Thickness  
48 mm



Maximum sizes  
Width 1286 mm, Height 3030



Minimum sizes  
Width 90 mm, Height 90 mm



### Standard colors

- Spring white
- Silver blue
- Sand

### Colors on request



Palette colors



Panel operating  
temperature

Between 10°C and 30°C



Relative operating  
humidity of the panel

Between 30% and 60%



Insulating  
flexural strength

KPa > 250



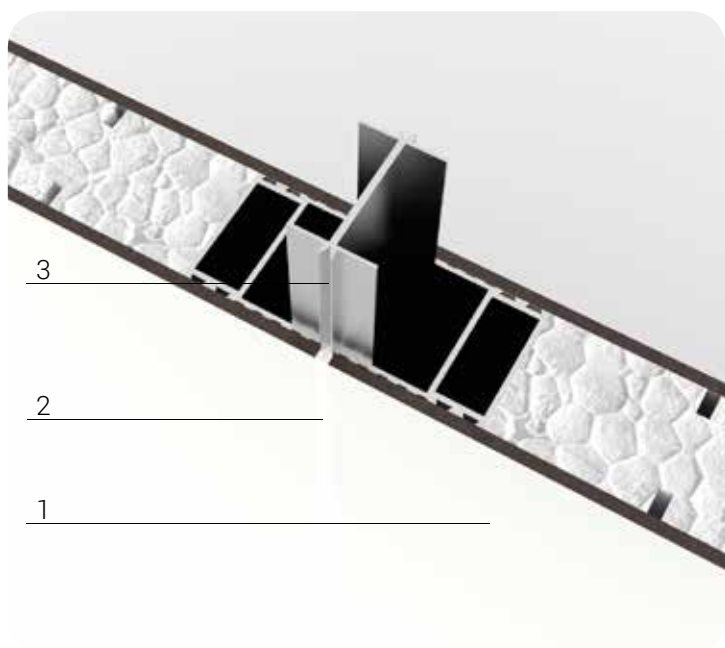
Thermal conductivity  $\lambda_D$   
Insulating

0,033 W/m²K



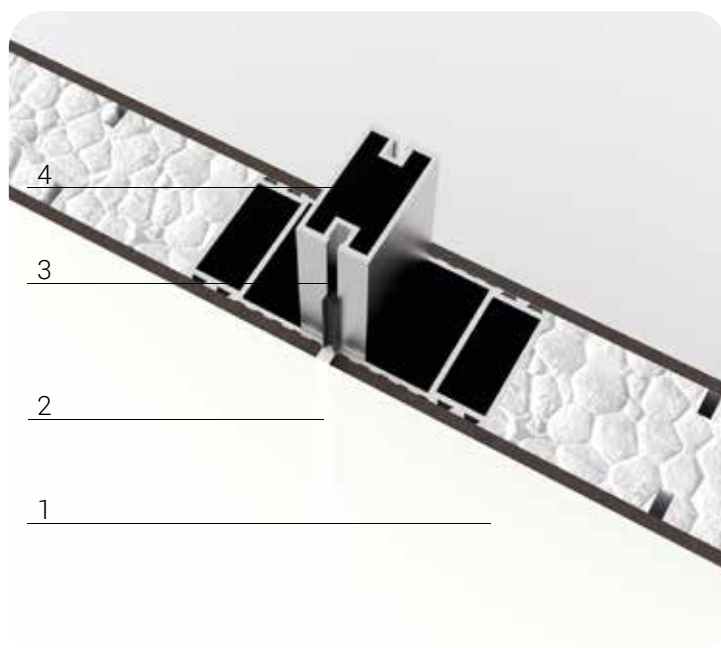
Insulating reaction  
to fire

Class E



### Panel joining detail

1. HPL panel
2. Caulked with silicone 4 mm
3. Aluminum connection profile



### Removable panel detail

1. HPL panel
2. Caulked with silicone 4 mm
3. Gasket
4. Aluminum connection profile for removable panel

**MODULAR PANEL**

Reaction to fire	NPD
Soundproof (dB)	Rw (C;Ctr) = 24 (-1;-2)dB
Weight (kg/m <sup>2</sup> )	15,30

Manufacturing time with standard colors: 4/5 weeks from shop drawings  
 Manufacturing time with no standard colors: Delivery time HPL 8 weeks. 4/5 from shop drawings

**EXTERNAL COATING WITH HPL**

Thickness (mm)	4	
Reaction to fire	Class B,s1-d0	
Release of formaldehyde	Class E1	
Impact resistance (rounds)	IP > 150	EN 438-2.10
Scratch resistance (power)	Grade > 3	EN 438-2.25
Impact resistance with small diameter sphere (Impact force)	N>20	EN 438-2.20
Standard colors	Spring white Silver Blue Sand	

**INTERNAL FRAME**

Aluminium C extruded profile th. 2 mm, with double reinforcement, cut to 45°, assembled with square for fixing

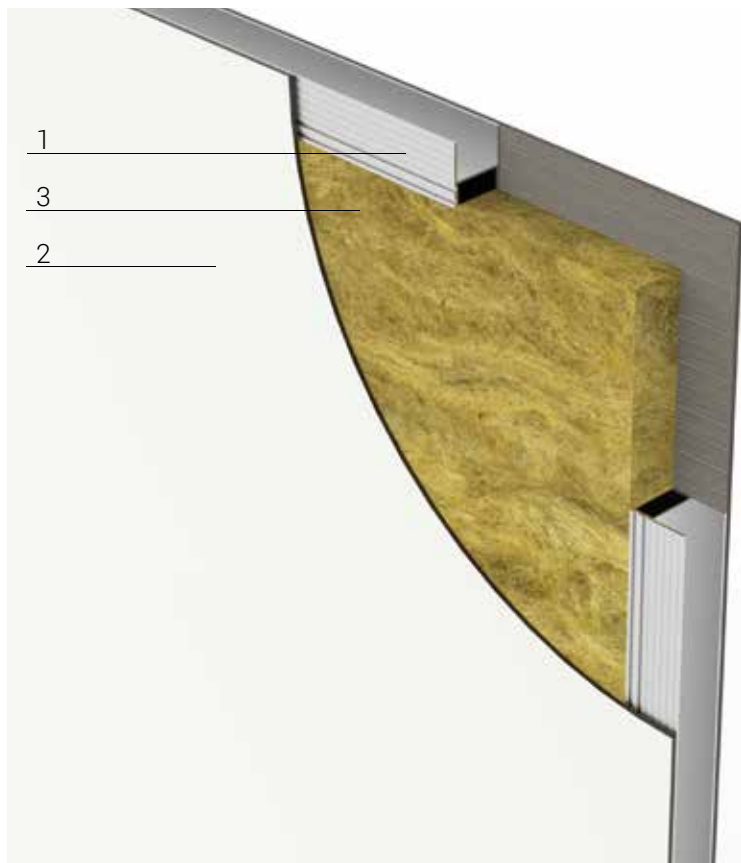
**INSULATING**

Polystyrene	Flexural strength	KPa > 250
Thickness (mm)	40	
Reaction to fire	Class E	EN 13501-1
Thermal conductivity $\lambda_D$ (W/mk)	0,033	EN 12667

## 1.1.2. High pressure laminate panel ( HPL )

Internal insulation **Rock wool**

art. cod. W-LAMRW



### Description

1. Internal extruded aluminum frame thickness 2 mm
2. External coating by high pressure laminate (th. 4 mm)
3. Internal insulation **rock wool**

Thickness  
48 mm






Maximum sizes  
Width 1286 mm, Height 3030 mm



Minimum sizes  
Width 90 mm, Height 90 mm



### Standard colors

- Spring white 
- Silver blue 
- Sand 

### Colors on request



Palette colors



Panel operating  
temperature

Between 10°C and 30°C



Relative operating  
humidity of the panel

Between 30% and 60%



Insulating density

120 Kg/m<sup>3</sup>



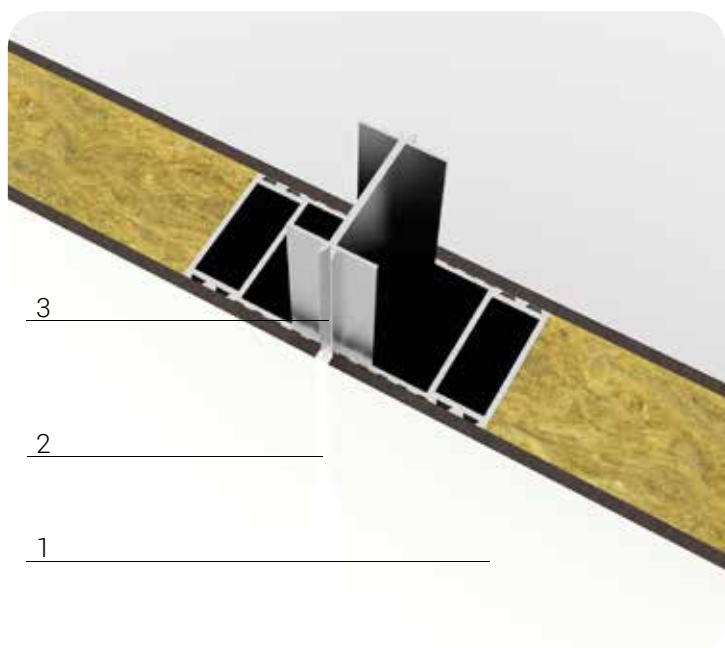
Thermal conductivity  $\lambda_D$   
Insulating

0,044 W/m<sup>2</sup>K



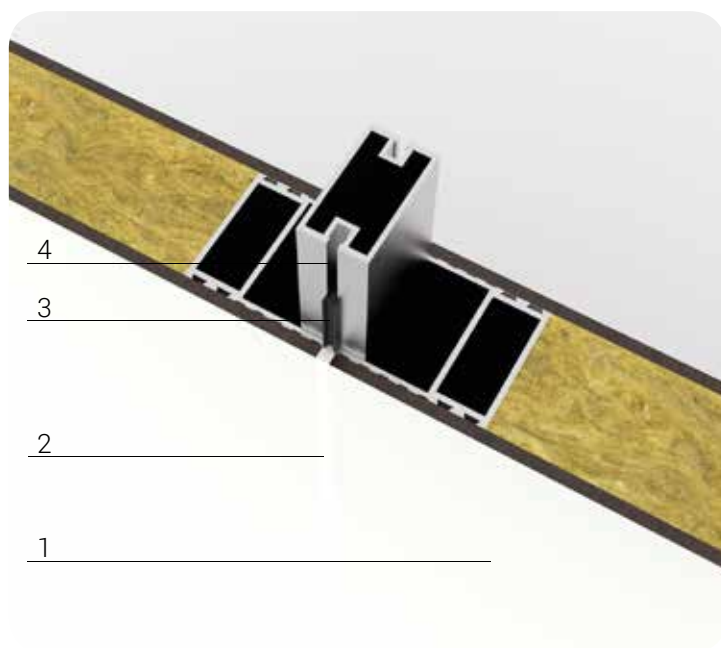
Insulating reaction  
to fire

Class A1



### Panel joining detail

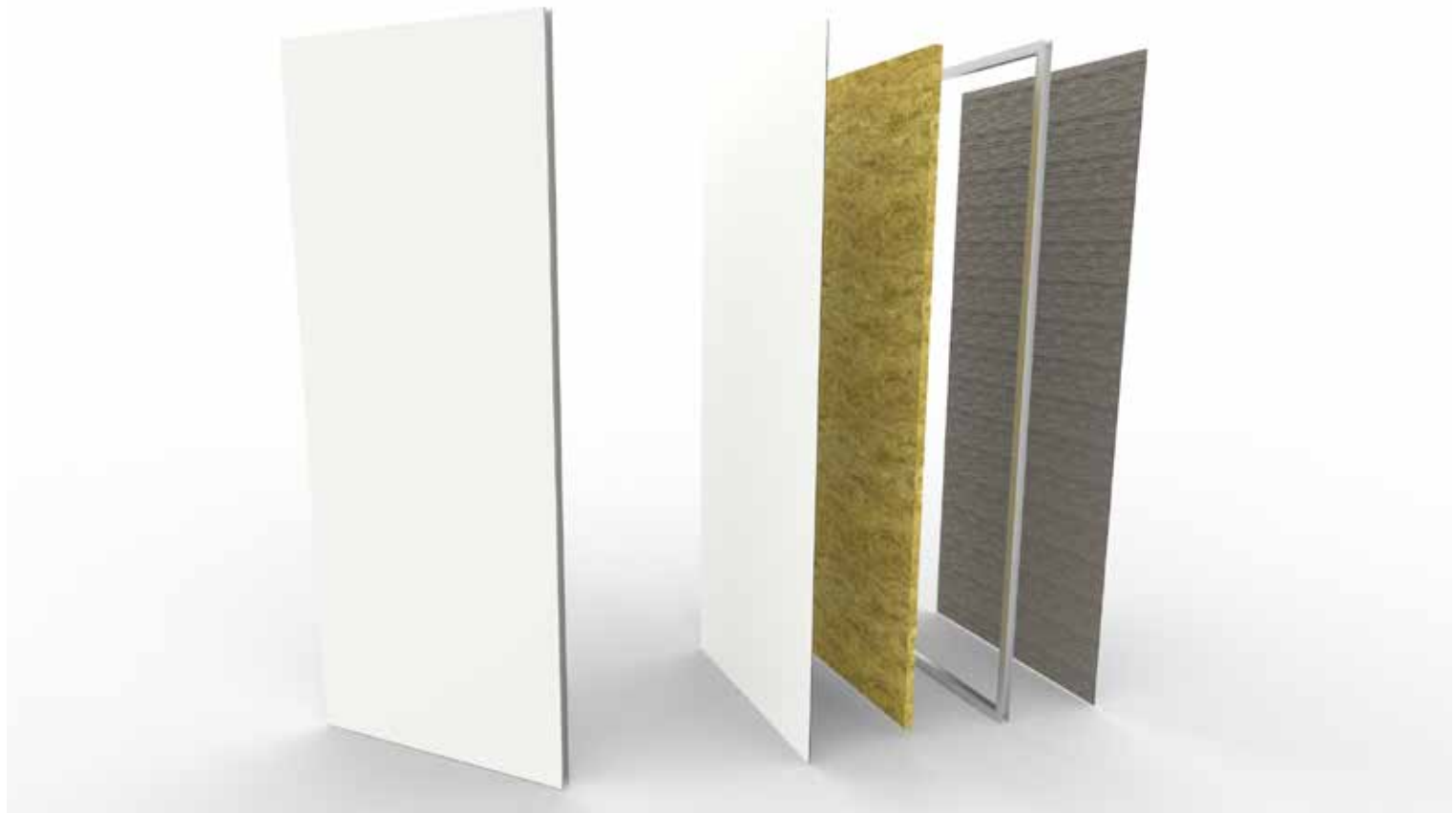
1. HPL panel
2. Caulked with silicone 4 mm
3. Aluminum connection profile



### Removable panel detail

1. HPL panel
2. Caulked with silicone 4 mm
3. Gasket
4. Aluminum connection profile for removable panel



**MODULAR PANEL**

Reaction to fire	Class B,s1-d0
Soundproof (dB)	Rw (C;Ctr) = 24 (-1;-2)dB
Weight (kg/m <sup>2</sup> )	19,50

Manufacturing time with standard colors: 4/5 weeks from shop drawings  
 Manufacturing time with no standard colors: Delivery time HPL 8 weeks. 4/5 from shop drawings

**EXTERNAL COATING WITH HPL**

Thickness (mm)	4	
Reaction to fire	Class B,s1-d0	
Release of formaldehyde	Class E1	
Impact resistance (rounds)	IP > 150	EN 438-2.10
Scratch resistance (power)	Grade > 3	EN 438-2.25
Impact resistance with small diameter sphere (Impact force)	N>20	EN 438-2.20
Standard colors	Spring white Silver Blue Sand	

**INTERNAL FRAME**

Aluminium C extruded profile th. 2 mm, with double reinforcement, cut to 45°, assembled with square for fixing

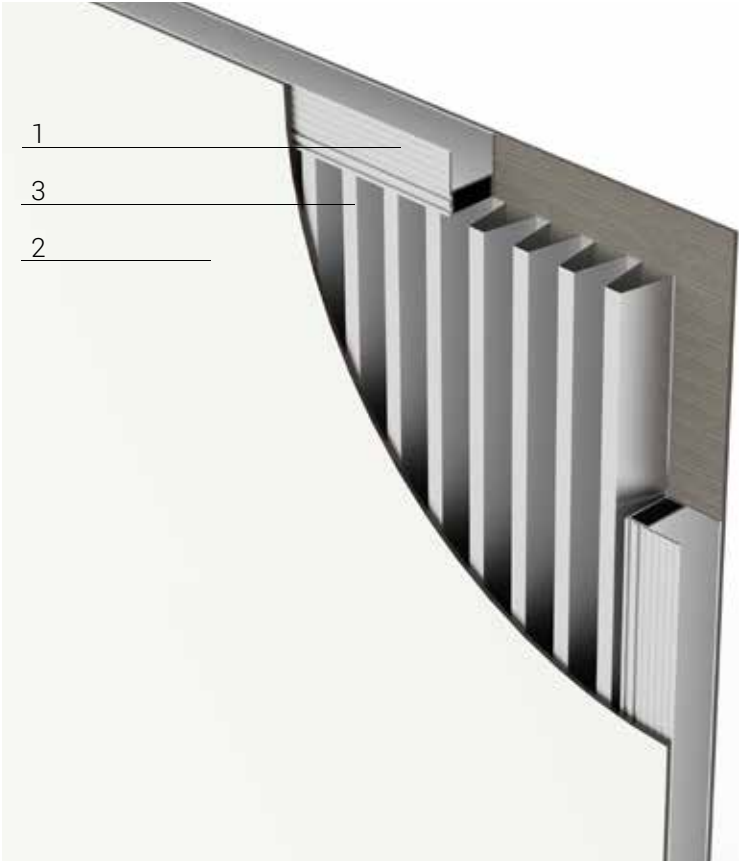
**INSULATING**

Rock wool	Density	120 Kg/m <sup>3</sup>
Thickness (mm)	40	
Reaction to fire	Class A1	EN 13501-1
Thermal conductivity $\lambda_D$ (W/mk)	0,044	EN 12667

1.1.3. High pressure laminate panel ( HPL )

Internal insulation **Honeycomb**

art. cod. W-LAMHC



Description

- 1. Internal extruded aluminum frame thickness 2 mm
- 2. External coating by high pressure laminate (th. 4 mm)
- 3. Internal insulation **Honeycomb**

Thickness  
48 mm

Maximum sizes  
Width 1286 mm, Height 3030 mm

Minimum sizes  
Width 90 mm, Height 90 mm

Standard colors

- Spring white
- Silver blue
- Sand

Colors on request



Panel operating  
temperature

Between 10°C and 30°C



Relative operating  
humidity of the panel

Between 30% and 60%



Insulating density

116 Kg/m³



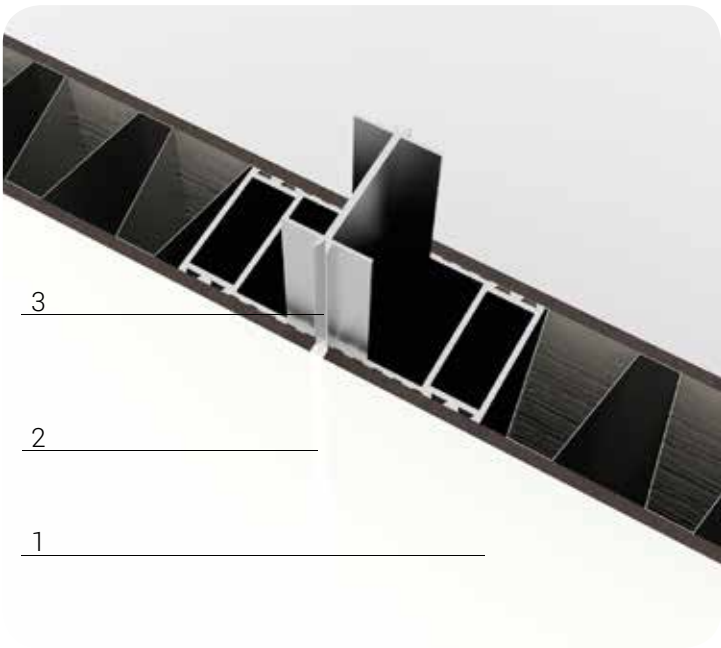
Thermal conductivity  $\lambda_D$   
Insulating

NPD



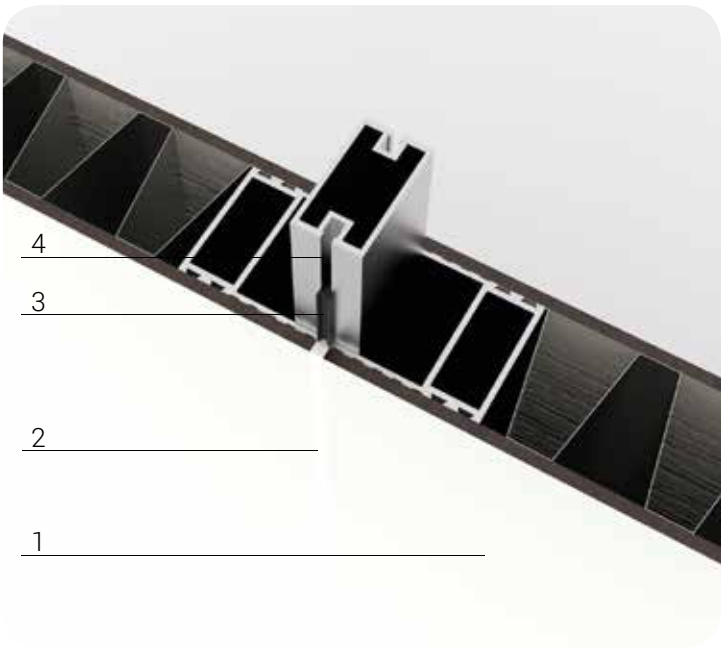
Insulating reaction  
to fire

Class A1



Panel joining detail

- 1. HPL panel
- 2. Caulked with silicone 4 mm
- 3. Aluminum connection profile



Removable panel detail

- 1. HPL panel
- 2. Caulked with silicone 4 mm
- 3. Gasket
- 4. Aluminum connection profile for removable panel

**MODULAR PANEL**

Reaction to fire	Classe B,s1-d0
Soundproof (dB)	Rw (C;Ctr) = 21( -1;-2) dB
Weight (kg/m <sup>2</sup> )	15,30

Manufacturing time with standard colors: 4/5 weeks from shop drawings  
 Manufacturing time with no standard colors: Delivery time HPL 8 weeks. 4/5 from shop drawings

**EXTERNAL COATING WITH HPL**

Thickness (mm)	4	
Reaction to fire	Class B,s1-d0	
Release of formaldehyde	Class E1	
Impact resistance (rounds)	IP > 150	EN 438-2.10
Scratch resistance (power)	Grade > 3	EN 438-2.25
Impact resistance with small diameter sphere (Impact force)	N>20	EN 438-2.20
Standard colors	Spring white Silver Blue Sand	

**INTERNAL FRAME**

Aluminium C extruded profile th. 2 mm, with double reinforcement, cut to 45°, assembled with square for fixing

**INSULATING**

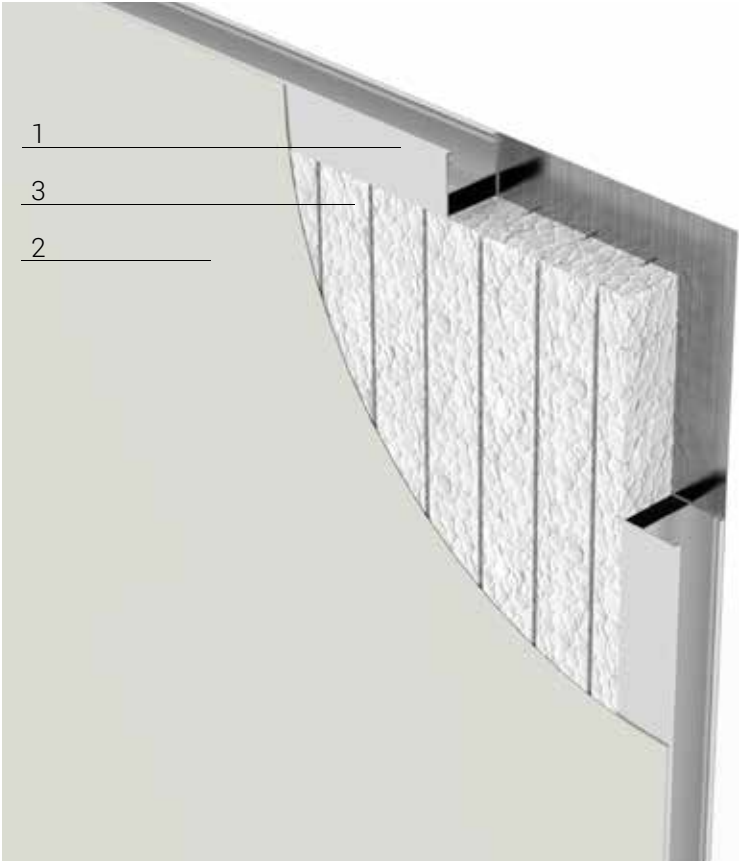
Honeycomb	Density	116 Kg/m <sup>3</sup>
Thickness (mm)	40	
Reaction to fire	Class A1	EN 13501-1
Thermal conductivity $\lambda_D$ (W/mk)	NPD	EN 12667



1.2.1.      Prepainted aluminum panel

Internal insulation **Polystyrene**

art. cod. W-ALLPO



Description

- 1. Internal extruded aluminum frame thickness 2 mm
- 2. External coating by prepainted aluminum (th. 12/10 )
- 3. Internal insulation **Polystyrene**

Thickness  
48 mm

Maximum sizes  
Width 1240 mm, Height 2990 mm

Minimum sizes  
Width 90 mm, Height 90 mm

Standard colors

- RAL 9010 - Pure white
- RAL 9003 - Signal white
- RAL 1013 - Oyster white

Colors on request  
RAL palette colors



Panel operating  
temperature

Without a prescription



Relative operating  
humidity of the panel

Without a prescription



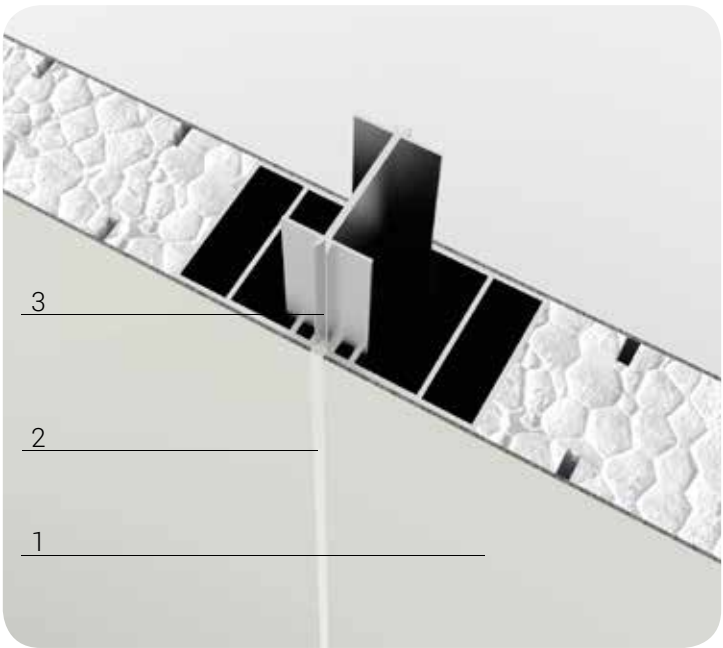
Insulating  
flexural strength  
Kpa > 250



Thermal conductivity  $\lambda_D$   
Insulating  
0,033 W/m²K

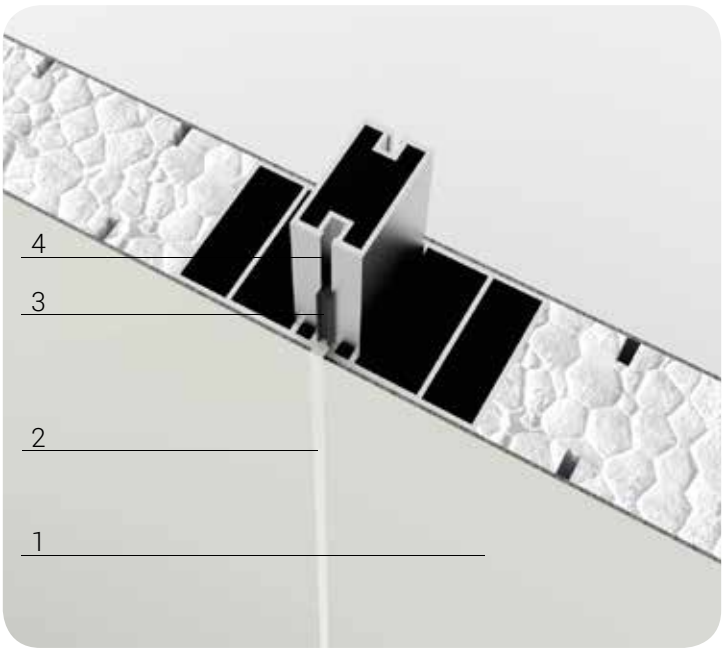


Insulating reaction  
to fire  
Class E



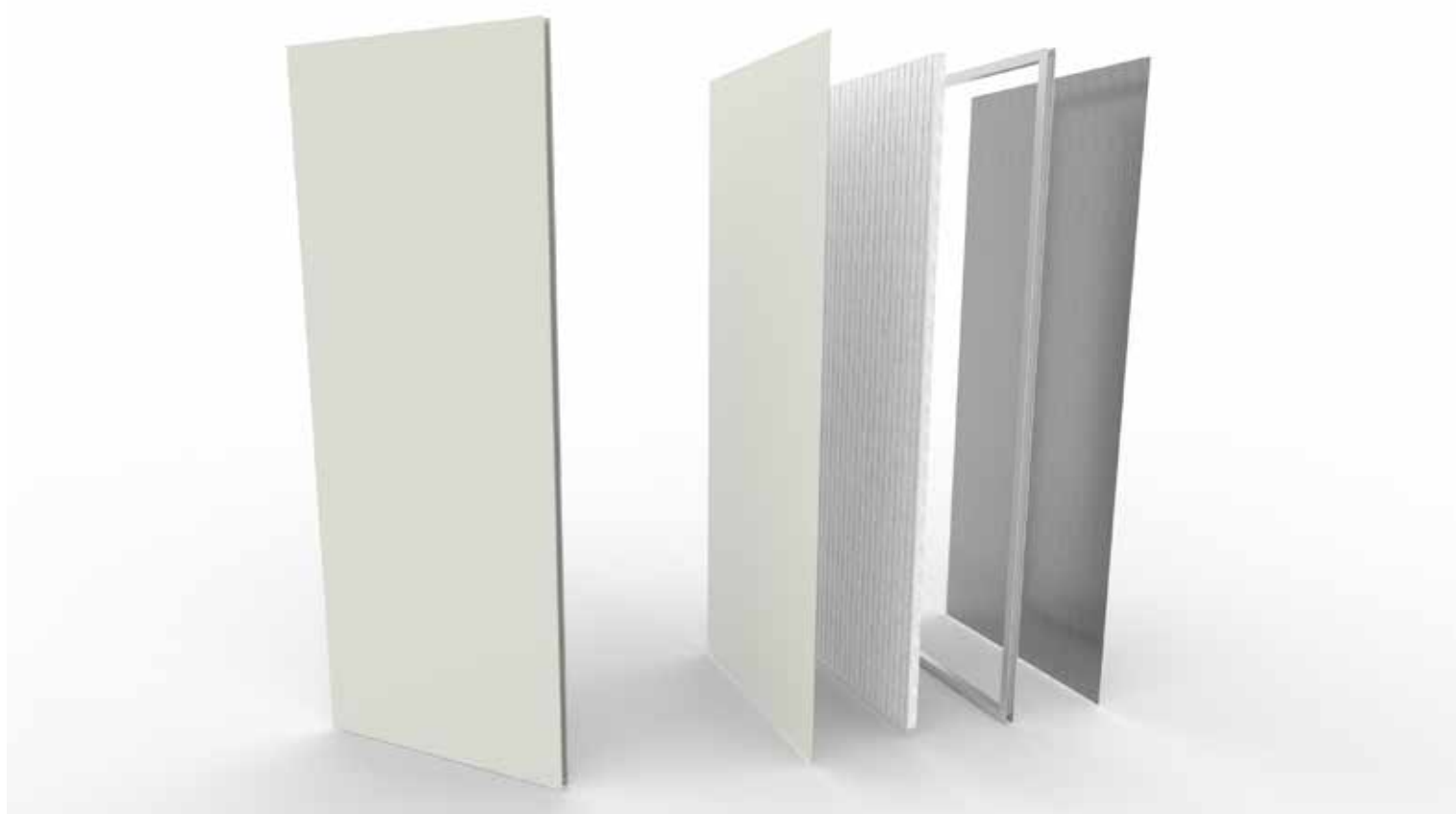
Panel joining detail

- 1. Prepainted aluminum panel
- 2. Caulked with silicone 4 mm
- 3. Aluminum connection profile



Removable panel detail

- 1. Prepainted aluminum panel
- 2. Caulked with silicone 4 mm
- 3. Gasket
- 4. Aluminum connection profile for removable panel

**MODULAR PANEL**

Reaction to fire	NPD
Soundproof (dB)	Rw (C;Ctr) = 24 (0;-1)dB
Weight (kg/m <sup>2</sup> )	11,40

Manufacturing time with standard colors: 4/5 weeks from shop drawings  
 Manufacturing time with no standard colors: Delivery time HPL 8 weeks. 4/5 from shop drawings

**EXTERNAL COATING WITH PREPAINTED ALUMINUM**

Thickness (mm)	1,2 mm	
Reaction to fire	Class A1	
Gloss	da 40+/-5 A 90+/-5	
Impact resistance (rounds)	Nf A 10Nm	ISO 6272
Resistance to bending	Nf A 1T	EN 438-2.25
Peelable	70-80 microns	EN 438-2.20
Standard colors	RAL 9010 Pure white RAL 9003 Signal white RAL 1013 Oyster white	

**INTERNAL FRAME**

Aluminium C extruded profile th. 2 mm, with double reinforcement, cut to 45°, assembled with square for fixing

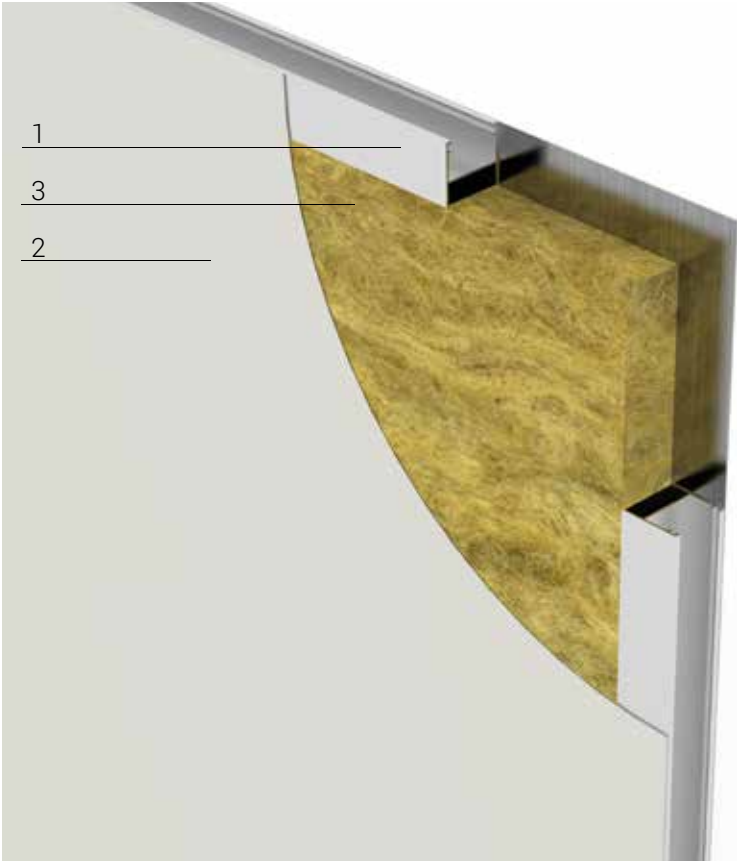
**INSULATING**

Polystyrene	Flexural strength	KPa > 250
Thickness (mm)	45	
Reaction to fire	Class E	EN 13501-1
Thermal conductivity $\lambda_D$ (W/mk)	0,033	EN 12667

1.2.2.    Prepainted aluminum panel

Internal insulation **Rock wool**

art. cod. W-ALLRW



Description

- 1. Internal extruded aluminum frame thickness 2 mm
- 2. External coating by prepainted aluminum (th. 12/10 )
- 3. Internal insulation **Rock wool**

Thickness  
48 mm

Maximum sizes  
Width 1240 mm, Height 2990 mm

Minimum sizes  
Width 90 mm, Height 90 mm

Standard colors

- RAL 9010 - Pure white
- RAL 9003 - Signal white
- RAL 1013 - Oyster white

Colors on request

RAL palette colors



Panel operating temperature

Without a prescription



Relative operating humidity of the panel

Without a prescription



Insulating density

120 Kg/m³



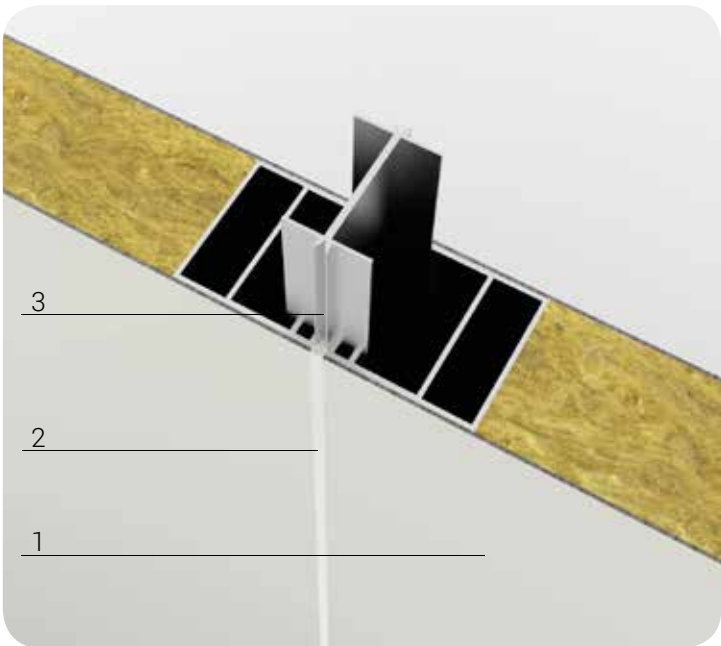
Thermal conductivity  $\lambda_D$   
Insulating

0,044 W/m²K



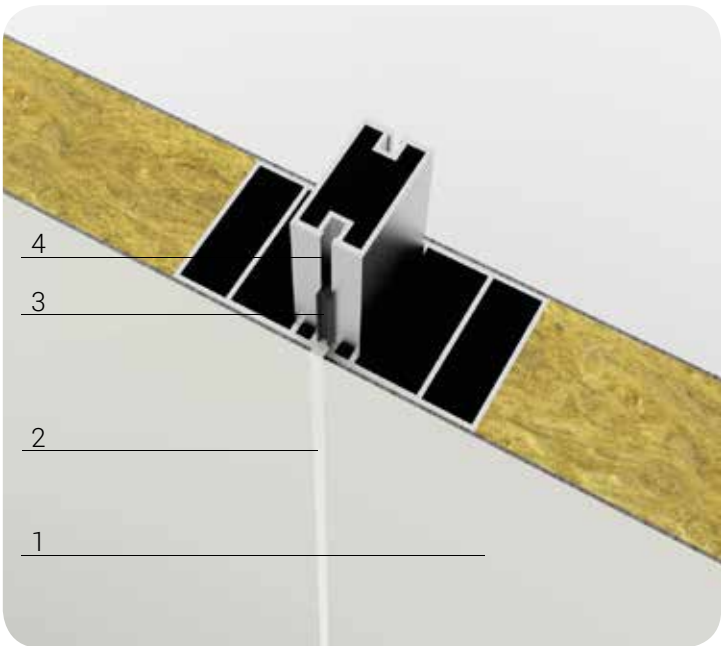
Insulating reaction to fire

Class A1



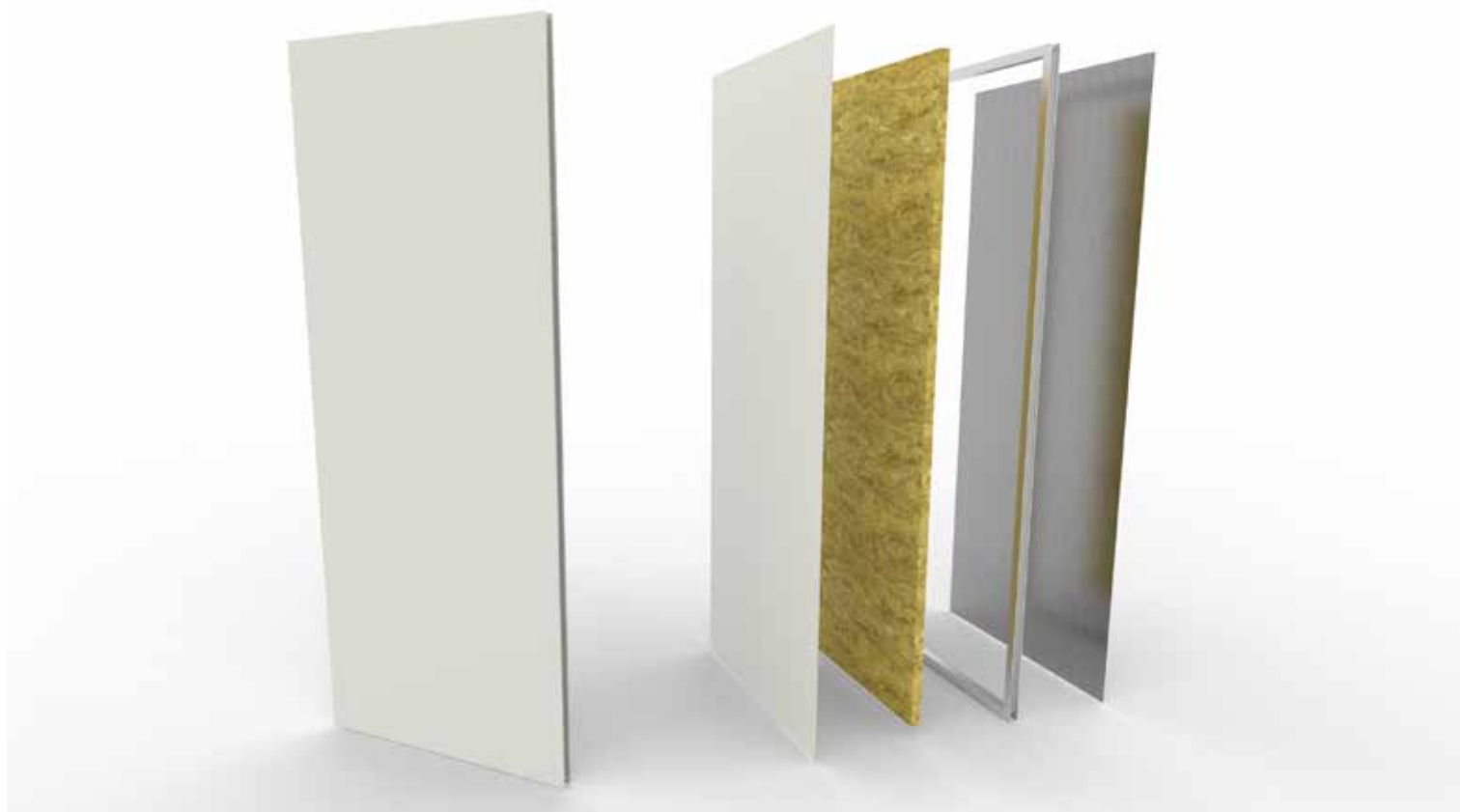
Panel joining detail

- 1. Prepainted aluminum panel
- 2. Caulked with silicone 4 mm
- 3. Aluminum connection profile



Removable panel detail

- 1. Prepainted aluminum panel
- 2. Caulked with silicone 4 mm
- 3. Gasket
- 4. Aluminum connection profile for removable panel

**MODULAR PANEL**

Reaction to fire	Class A2,s1-d0
Soundproof (dB)	Rw (C;Ctr) = 24 (0;-1)dB
Weight (kg/m <sup>2</sup> )	15,56

Manufacturing time with standard colors: 4/5 weeks from shop drawings

Manufacturing time with no standard colors: Delivery time of aluminum 3 weeks. 4/5 from shop drawings

**EXTERNAL COATING WITH PREPAINTED ALUMINUM**

Thickness (mm)	1,2 mm	
Reaction to fire	Class A1	
Gloss	da 40+/-5 A 90+/-5	
Impact resistance (rounds)	Nf A 10Nm	ISO 6272
Resistance to bending	Nf A 1T	
Peelable	70-80 MICRONS	
Standard colors	RAL 9010 Pure white RAL 9003 Signal white RAL 1013 Oyster white	

**INTERNAL FRAME**

Aluminium C extruded profile th. 2 mm, with double reinforcement, cut to 45°, assembled with square for fixing

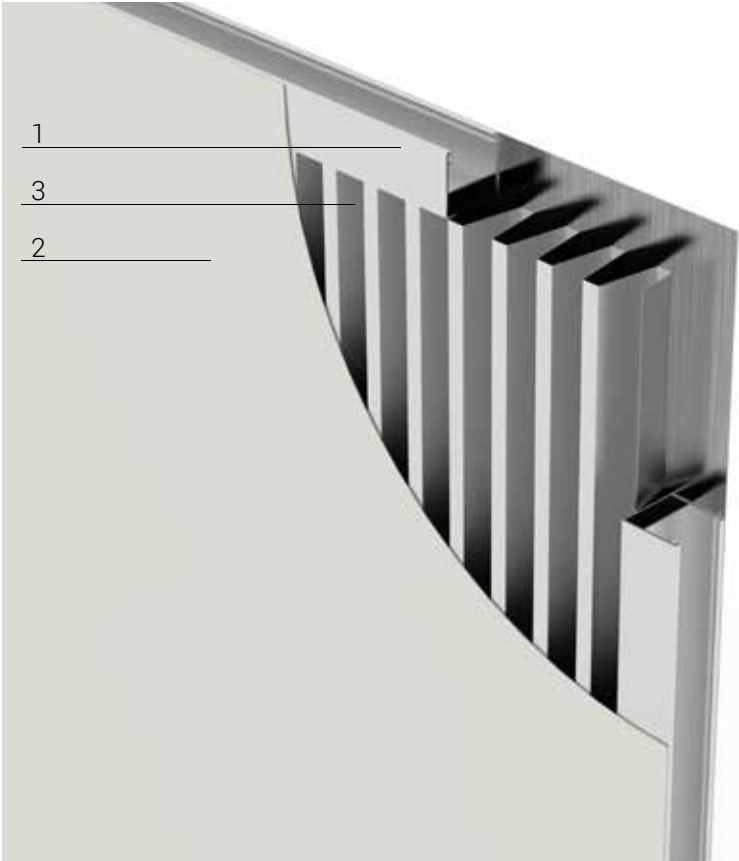
**INSULATING**

Rock wool	Density	120 Kg/m <sup>3</sup>
Thickness (mm)	45	
Reaction to fire	Class A1	EN 13501-1
Thermal conductivity $\lambda_D$ (W/mk)	0,044	EN 12667

1.2.3      Prepainted aluminum panel

Internal insulation **Honeycomb**

art. cod. W-ALLHC



Description

- 1. Internal extruded aluminum frame thickness 2 mm
- 2. External coating by prepainted aluminum (th. 12/10 )
- 3. Internal insulation **Honeycomb**

Thickness  
48 mm

Maximum sizes  
Width 1240 mm, Height 2990 mm

Minimum sizes  
Width 90 mm, Height 90 mm

Standard colors

- RAL 9010 - Pure white
- RAL 9003 - Signal white
- RAL 1013 - Oyster white

Colors on request

RAL palette colors



Panel operating temperature

Without a prescription



Relative operating humidity of the panel

Without a prescription



Insulating density

116 Kg/m³



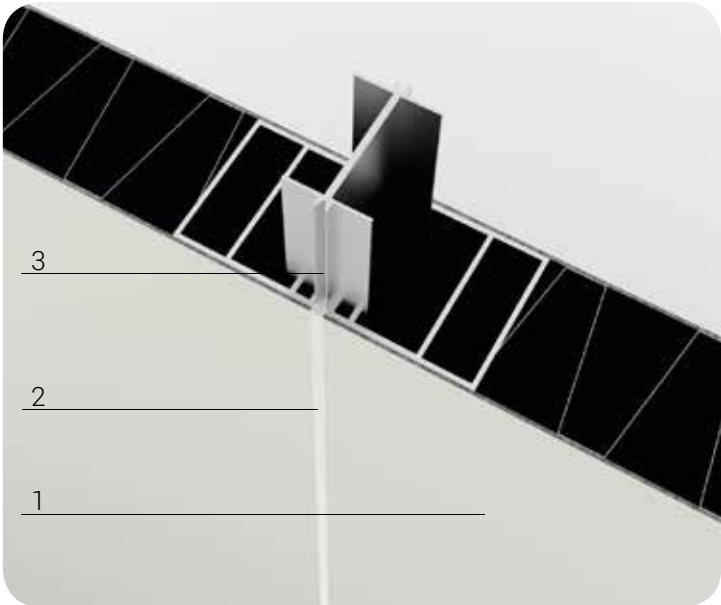
Thermal conductivity  $\lambda_D$

Insulating  
NPD



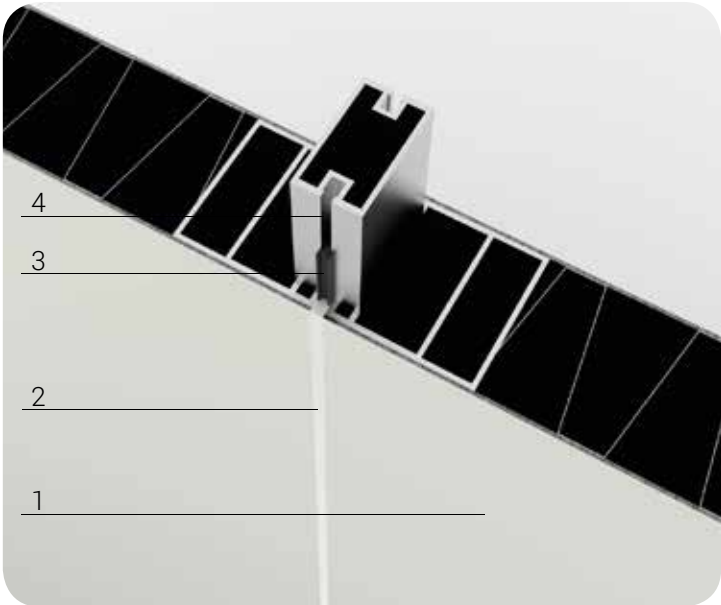
Insulating reaction to fire

Class A1



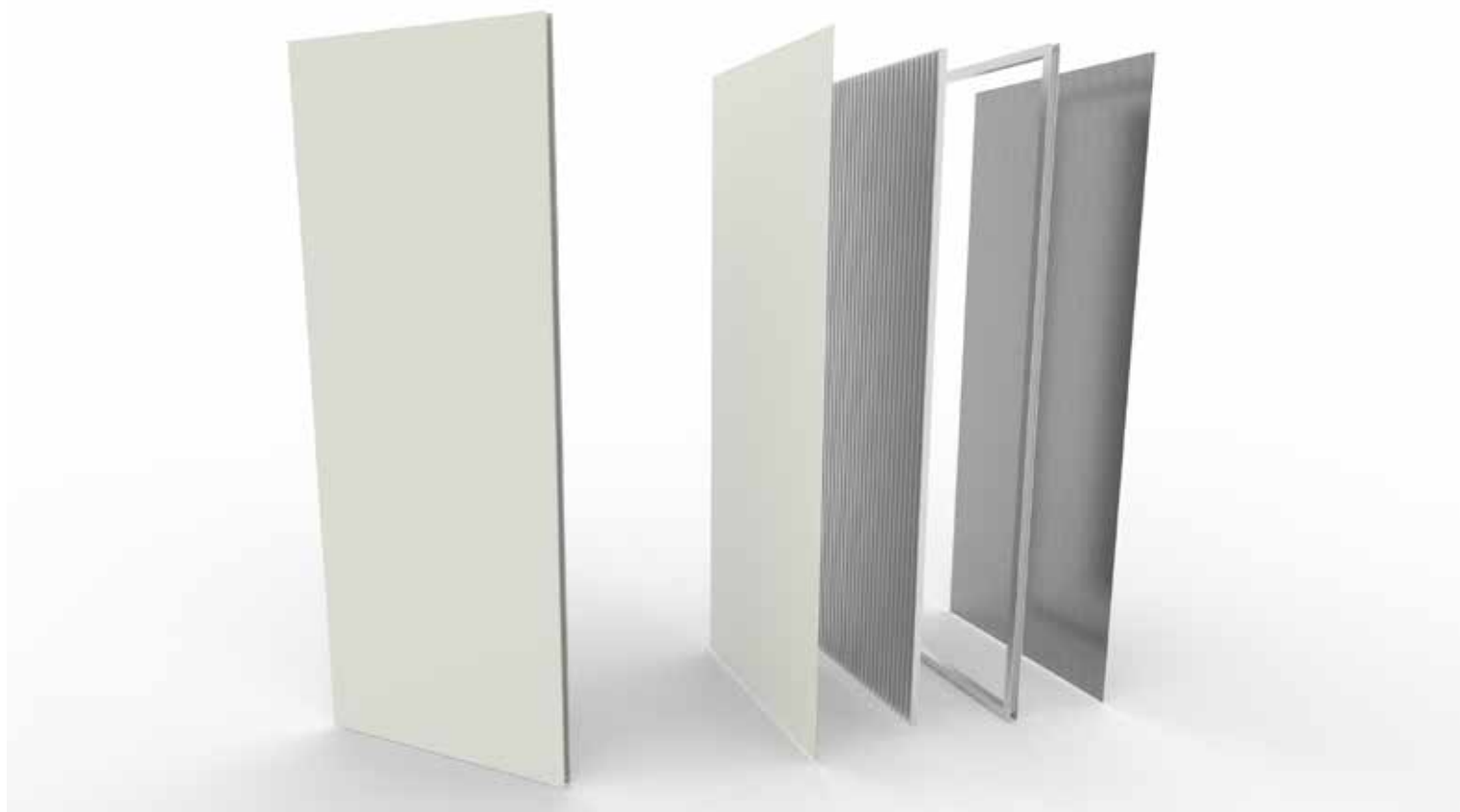
Panel joining detail

- 1. Prepainted aluminum panel
- 2. Caulked with silicone 4 mm
- 3. Aluminum connection profile



Removable panel detail

- 1. Prepainted aluminum panel
- 2. Caulked with silicone 4 mm
- 3. Gasket
- 4. Aluminum connection profile for removable panel

**MODULAR PANEL**

Reaction to fire	Classe A2,s1-d0
Soundproof (dB)	Rw (C;Ctr) = 24 (0;-1)dB
Weight (kg/m <sup>2</sup> )	11,81
Manufacturing time with standard colors: 4/5 weeks from shop drawings	
Manufacturing time with no standard colors: Delivery time of aluminum 3 weeks. 4/5 from shop drawings	

**EXTERNAL COATING WITH PREPAINTED ALUMINUM**

Thickness (mm)	1.2 mm	
Reaction to fire	Classe A1	
Gloss	da 40+/-5 A 90+/-5	
Impact resistance (rounds)	Nf A 10Nm	ISO 6272
Resistance to bending	Nf A 1T	
Peelable	70-80 MICRONS	
Standard colors	RAL 9010 Pure white RAL 9003 Signal white RAL 1013 Oyster white	

**INTERNAL FRAME**

Aluminium C extruded profile th. 2 mm, with double reinforcement, cut to 45°, assembled with square for fixing

**INSULATING**

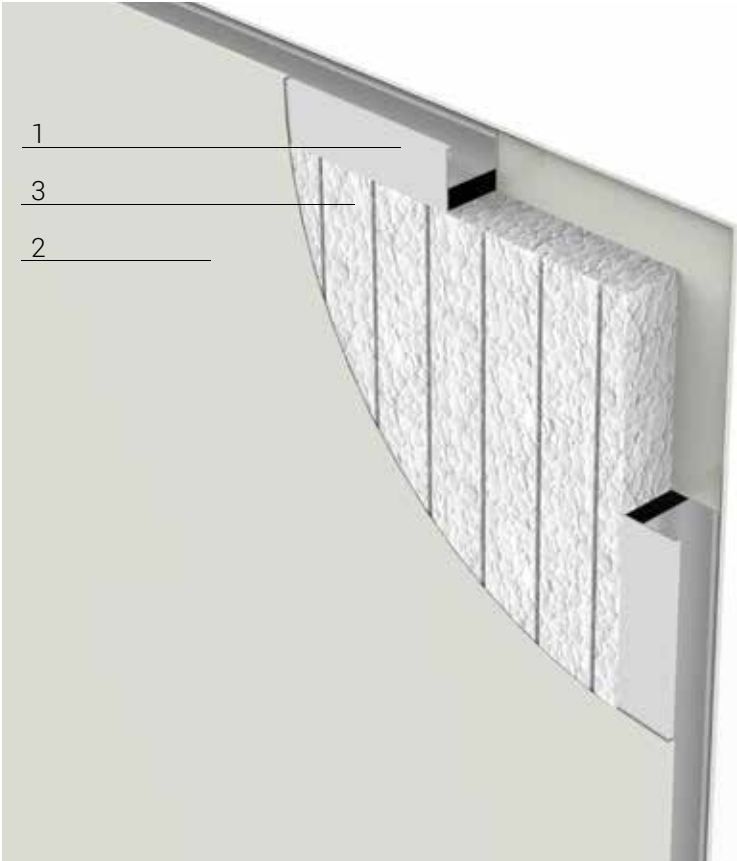
Honeycomb	Density	116 Kg/m³
Thickness (mm)	45	
Reaction to fire	Classe A1	EN 13501-1
Thermal conductivity $\lambda_p$ (W/mk)	NPD	



1.3.1 Galvanized steel panel ( Metal panel )

Internal insulation **Polystyrene**

art. cod. W-FERPO



Description

1. Internal extruded aluminum frame thickness 2 mm
2. External coating by prepainted galvanized steel (th. 7/10)
3. Internal insulation **Polystyrene**

Thickness  
48 mm



Maximum sizes  
Width 1240 mm, Height 2990 mm



Minimum sizes  
Width 90 mm, Height 90 mm



Standard colors

RAL 9010 - Pure white



RAL 9003 - Signal white



RAL 1013 - Oyster white



Colors on request



RAL palette colors



Panel operating  
temperature

Without a prescription



Relative operating  
humidity of the panel

Without a prescription



Insulating  
flexural strength

Kpa > 250



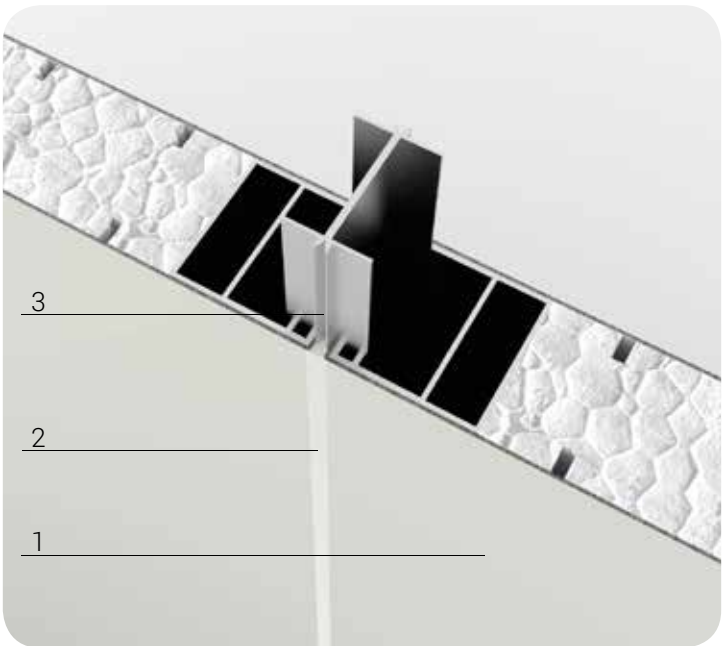
Thermal conductivity  $\lambda_D$   
Insulating

0,033 W/m<sup>2</sup>K



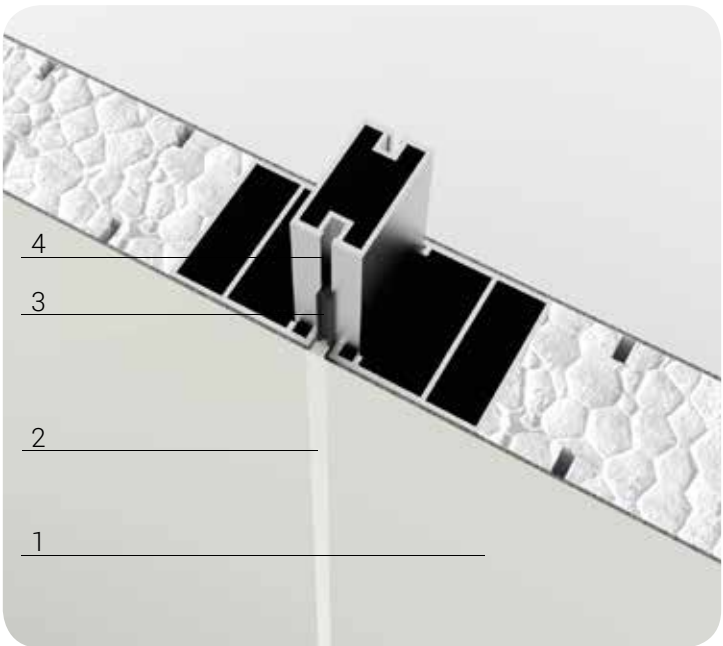
Insulating reaction  
to fire

Class E



Panel joining detail

1. Prepainted galvanized steel panel
2. Caulked with silicone 4 mm
3. Aluminum connection profile



Removable panel detail

1. Prepainted galvanized steel panel
2. Caulked with silicone 4 mm
3. Gasket
4. Aluminum connection profile for removable panel

**MODULAR PANEL**

Reaction to fire	NPD
Soundproof (dB)	NPD
Weight (kg/m <sup>2</sup> )	15,30

Manufacturing time with standard colors: 4/5 weeks from shop drawings

Manufacturing time with no standard colors: Delivery time of galvanized steel 3 weeks. 4/5 from shop drawings

**EXTERNAL COATING WITH PREPAINTED GALVANIZED STEEL**

Thickness (mm)	0,6 - 0,7 mm
Reaction to fire	Class A1
Gloss	NPD
Impact resistance (rounds)	NPD
Resistance to bending	NPD
Peelable	NPD
Standard colors	RAL 9010 Pure white RAL 9003 Signal white RAL 1013 Oyster white

**INTERNAL FRAME**

Aluminium C extruded profile th. 2 mm, with double reinforcement, cut to 45°, assembled with square for fixing

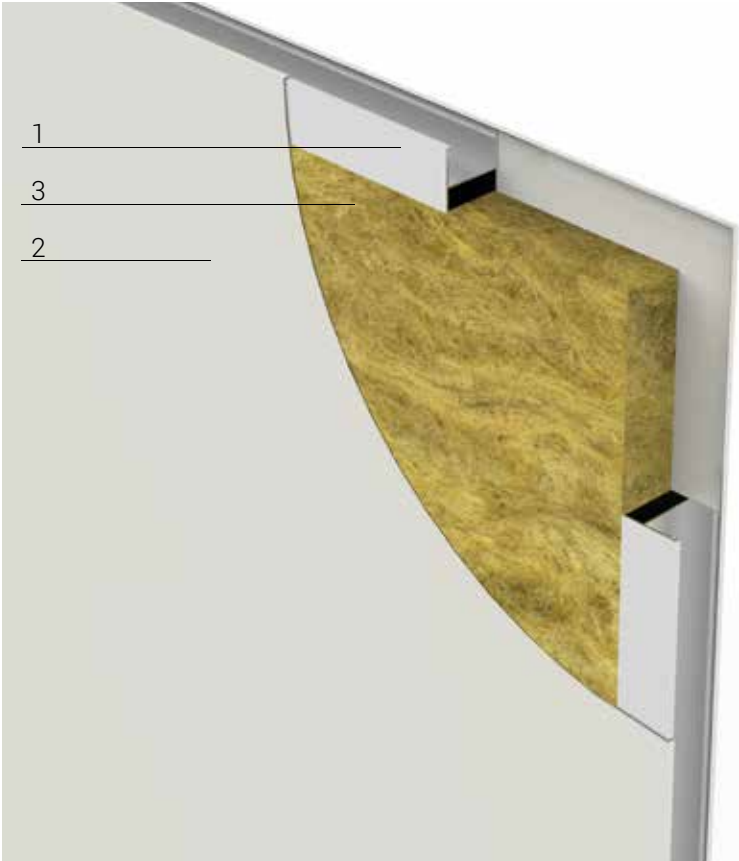
**INSULATING**

Polystyrene	Flexural strength	KPa > 250
Thickness (mm)	45	
Reaction to fire	Class E	EN 13501-1
Thermal conductivity $\lambda_D$ (W/mk)	0,033	EN 12667

1.3.2. Galvanized steel panel ( Metal panel )

Internal insulation **Rock wool**

art. cod. W-FERRW



Description

- 1. Internal extruded aluminum frame thickness 2 mm
- 2. External coating by prepainted galvanized steel (th. 7/10 )
- 3. Internal insulation **Rock wool**

Thickness  
48 mm

Maximum sizes  
Width 1240 mm, Height 2990 mm

Minimum sizes  
Width 90 mm, Height 90 mm

Standard colors

- RAL 9010 - Pure white
- RAL 9003 - Signal white
- RAL 1013 - Oyster white

Colors on request  
RAL palette colors



Panel operating temperature

Without a prescription



Relative operating humidity of the panel

Without a prescription



Insulating density

120 Kg/m³



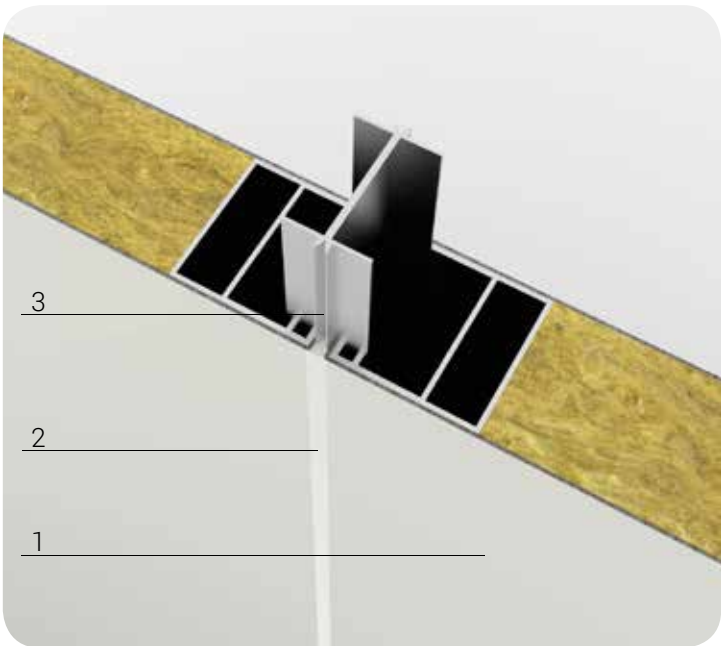
Thermal conductivity  $\lambda_D$   
Insulating

0,044 W/m²K



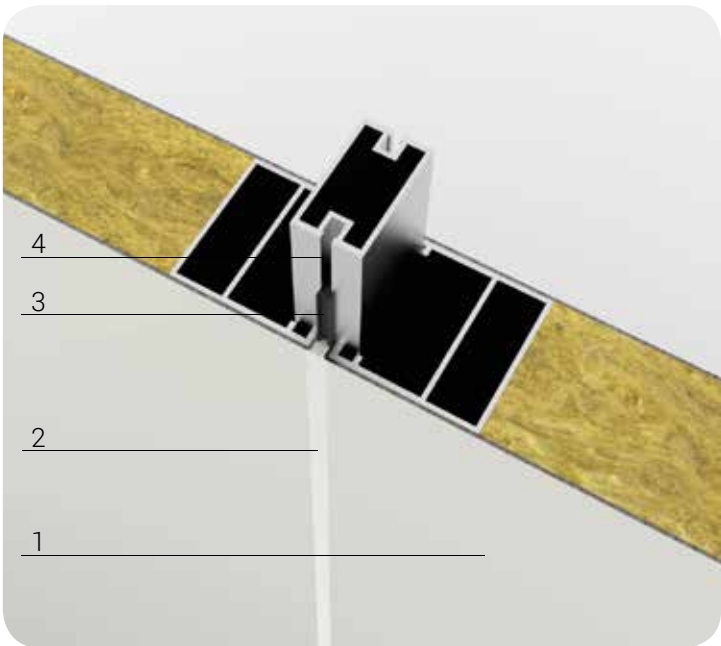
Insulating reaction to fire

Class A1



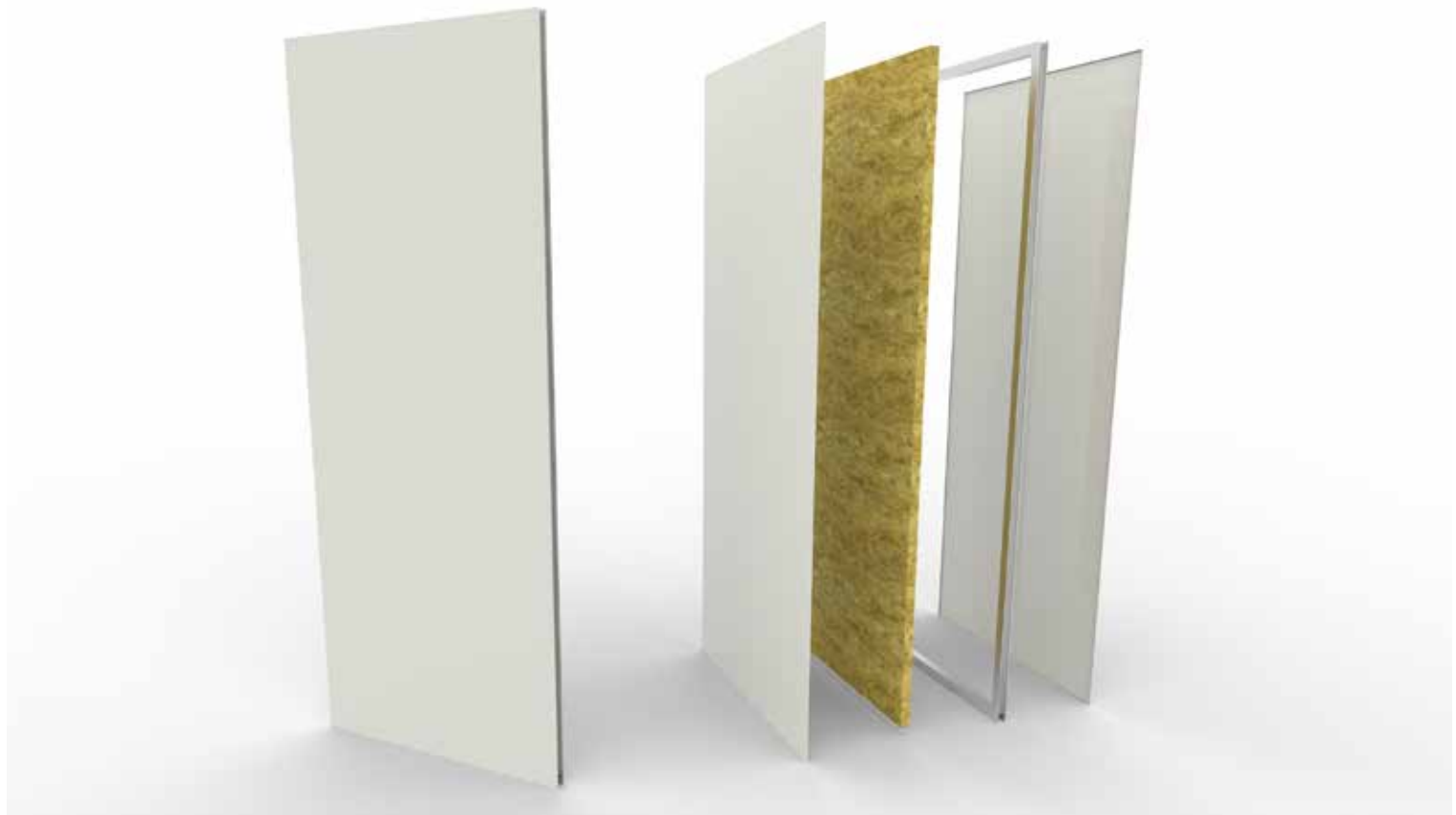
Panel joining detail

- 1. Prepainted galvanized steel panel
- 2. Caulked with silicone 4 mm
- 3. Aluminum connection profile



Removable panel detail

- 1. Prepainted galvanized steel panel
- 2. Caulked with silicone 4 mm
- 3. Gasket
- 4. Aluminum connection profile for removable panel

**MODULAR PANEL**

Reaction to fire	Class A2,s1-d0
Soundproof (dB)	NPD
Weight (kg/m <sup>2</sup> )	19.50
Manufacturing time with standard colors: 4/5 weeks from shop drawings	
Manufacturing time with no standard colors: Delivery time of galvanized steel 3 weeks. 4/5 from shop drawings	

**EXTERNAL COATING WITH PREPAINTED GALVANIZED STEEL**

Thickness (mm)	0,6 - 0,7 mm
Reaction to fire	Class A1
Gloss	NPD
Impact resistance (rounds)	NPD
Resistance to bending	NPD
Peelable	NPD
Standard colors	RAL 9010 Pure white RAL 9003 Signal white RAL 1013 Oyster white

**INTERNAL FRAME**

Aluminium C extruded profile th. 2 mm, with double reinforcement, cut to 45°, assembled with square for fixing

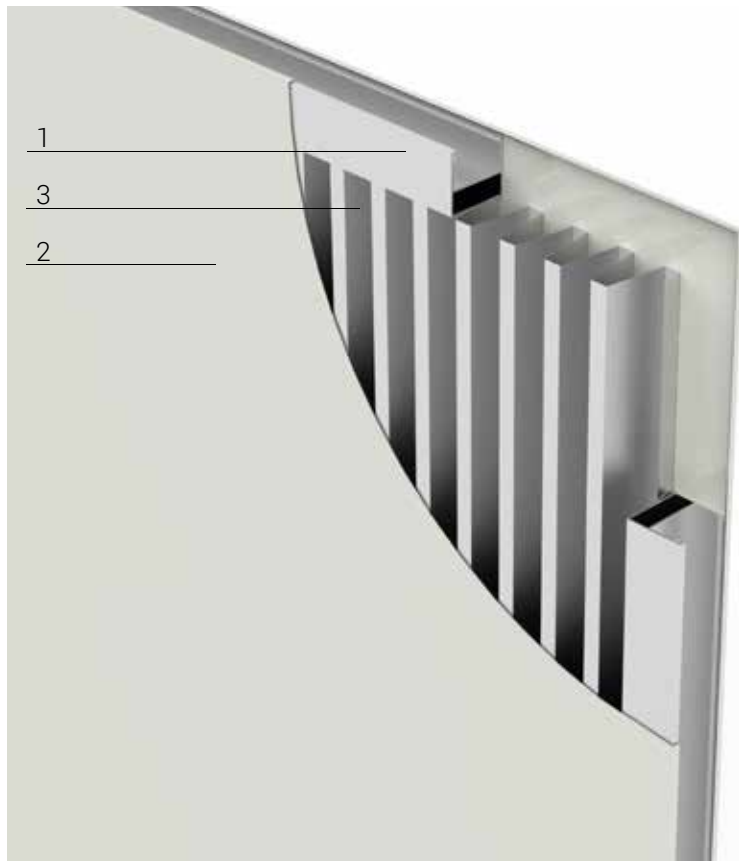
**INSULATING**

Rock wool	Density	120 Kg/m <sup>3</sup>
Thickness (mm)	45	
Reaction to fire	Class A1	EN 13501-1
Thermal conductivity $\lambda_D$ (W/mk)	0,044	EN 12667

### 1.3.3. Galvanized steel panel ( Metal panel )

Internal insulation **Honeycomb**

cod. art. W-FERHC



#### Description

1. Internal extruded aluminum frame thickness 2 mm
2. External coating by prepainted galvanized steel (th. 7/10 )
3. Internal insulation **Honeycomb**

Thickness  
48 mm



Maximum sizes  
Width 1240 mm, Height 2990 mm



Minimum sizes  
Width 90 mm, Height 90 mm



#### Standard colors

RAL 9010 - Pure white



RAL 9003 - Signal white



RAL 1013 - Oyster white



#### Colors on request



RAL palette colors



Panel operating  
temperature

Without a prescription



Relative operating  
humidity of the panel

Without a prescription



Insulating density

116 Kg/m<sup>3</sup>



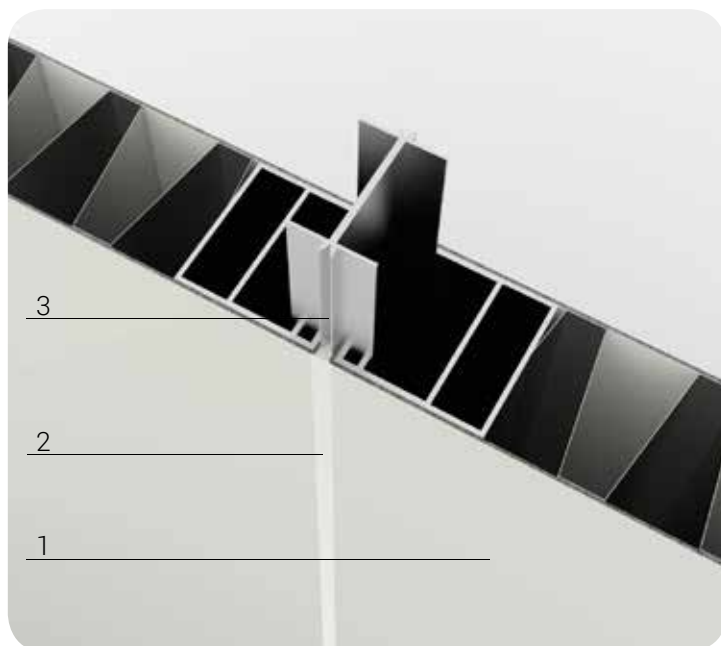
Thermal conductivity  $\lambda_D$   
Insulating

NPD



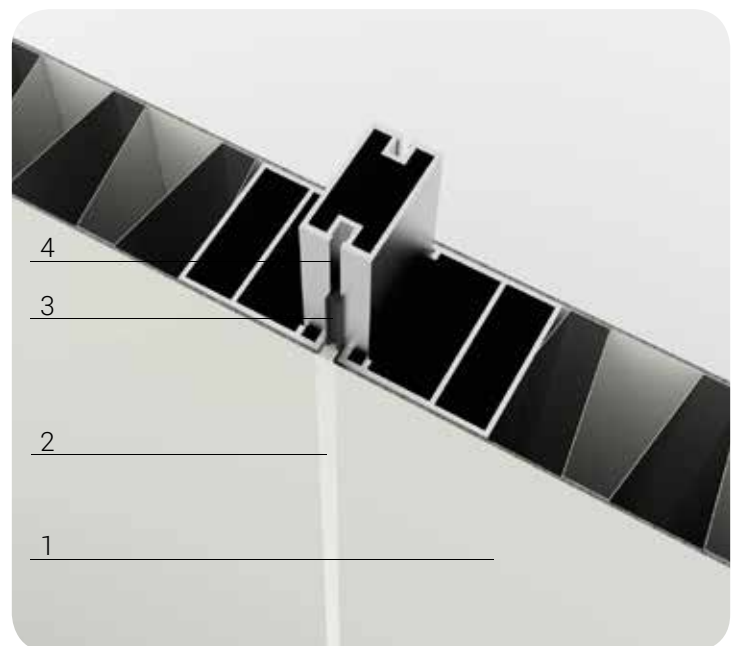
Insulating reaction  
to fire

Class A1



#### Panel joining detail

1. Prepainted galvanized steel panel
2. Caulked with silicone 4 mm
3. Aluminum connection profile



#### Removable panel detail

1. Prepainted galvanized steel panel
2. Caulked with silicone 4 mm
3. Gasket
4. Aluminum connection profile for removable panel

**MODULAR PANEL**

Reaction to fire	NPD
Soundproof (dB)	NPD
Weight (kg/m <sup>2</sup> )	19.50

Manufacturing time with standard colors: 4/5 weeks from shop drawings

Manufacturing time with no standard colors: Delivery time of galvanized steel 3 weeks. 4/5 from shop drawings

**EXTERNAL COATING WITH PREPAINTED GALVANIZED STEEL**

Thickness (mm)	0,6 - 0,7 mm
Reaction to fire	Class A1
Gloss	NPD
Impact resistance (rounds)	NPD
Resistance to bending	NPD
Peelable	NPD

Standard colors	RAL 9010 Pure white RAL 9003 Signal white RAL 1013 Oyster white
-----------------	-----------------------------------------------------------------------

**INTERNAL FRAME**

Aluminium C extruded profile th. 2 mm, with double reinforcement, cut to 45°, assembled with square for fixing

**INSULATING**

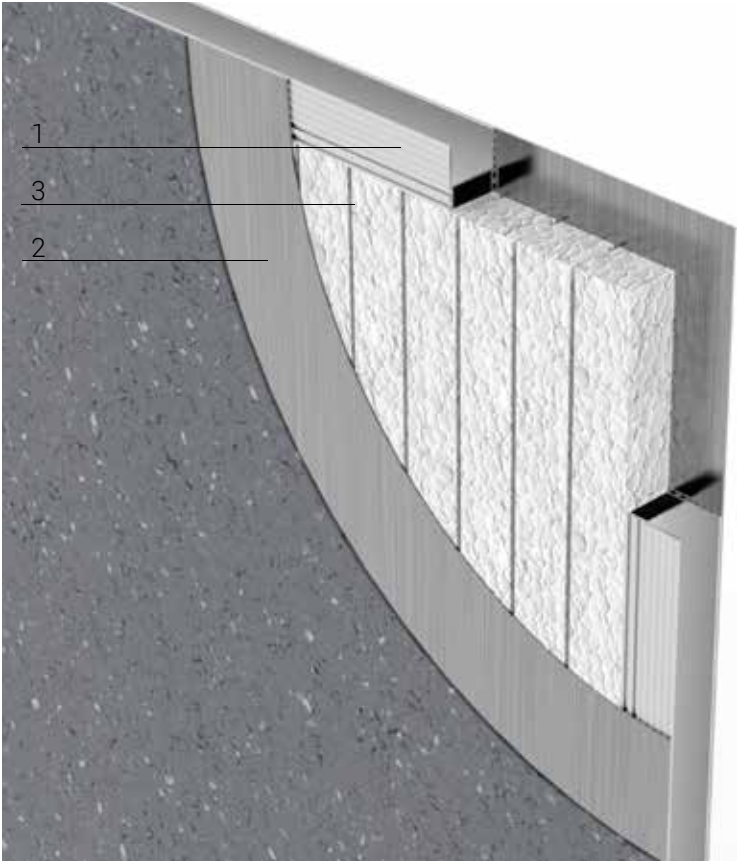
Honeycomb	Density	116 Kg/m <sup>3</sup>
Thickness (mm)	45	
Reaction to fire	Class A1	EN 13501-1
Thermal conductivity $\lambda_D$ (W/mk)	NPD	



1.4.1. Raw aluminum panel to cover by PVC

Internal insulation **Polystyrene**

art. cod. W-ALLGRPO



Description

- 1. Internal extruded aluminum frame thickness 2 mm
- 2. External coating by raw aluminum (th. 20/10 )
- 3. Internal insulation **Polystyrene**

Thickness  
48 mm

Maximum sizes  
Width 1240 mm, Height 2990 mm

Minimum sizes  
Width 90 mm, Height 90 mm

Finishing

Raw aluminum



Panel operating  
temperature

Without a prescription



Relative operating  
humidity of the panel

Without a prescription



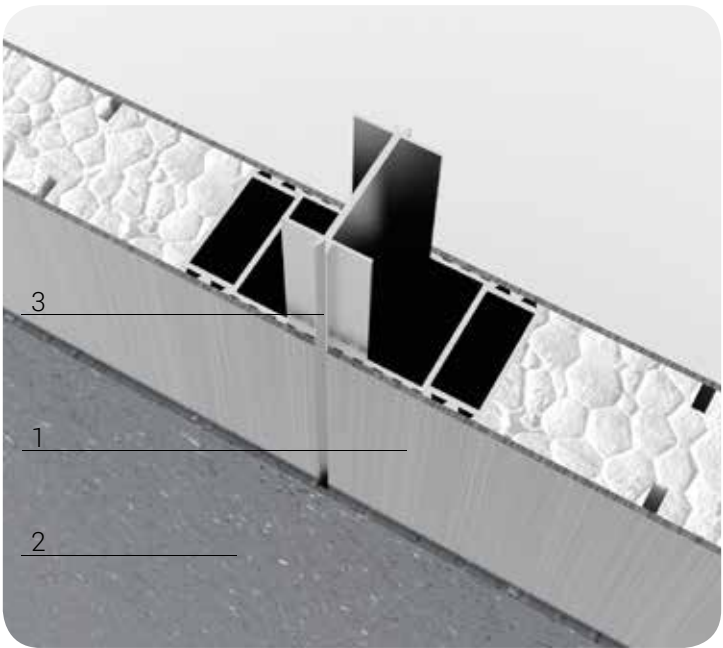
Insulating  
flexural strength  
Kpa > 250



Thermal conductivity  $\lambda_D$   
Insulating  
0,033 W/m²K

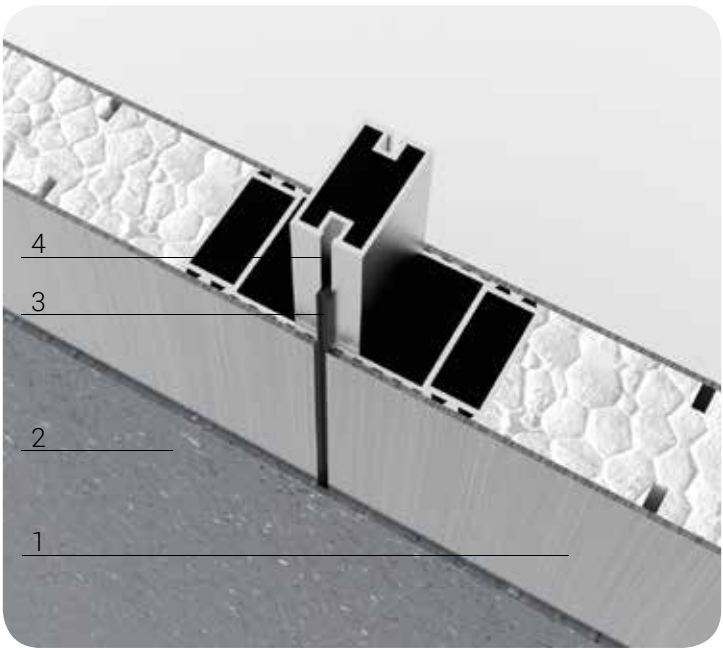


Insulating reaction  
to fire  
Class E



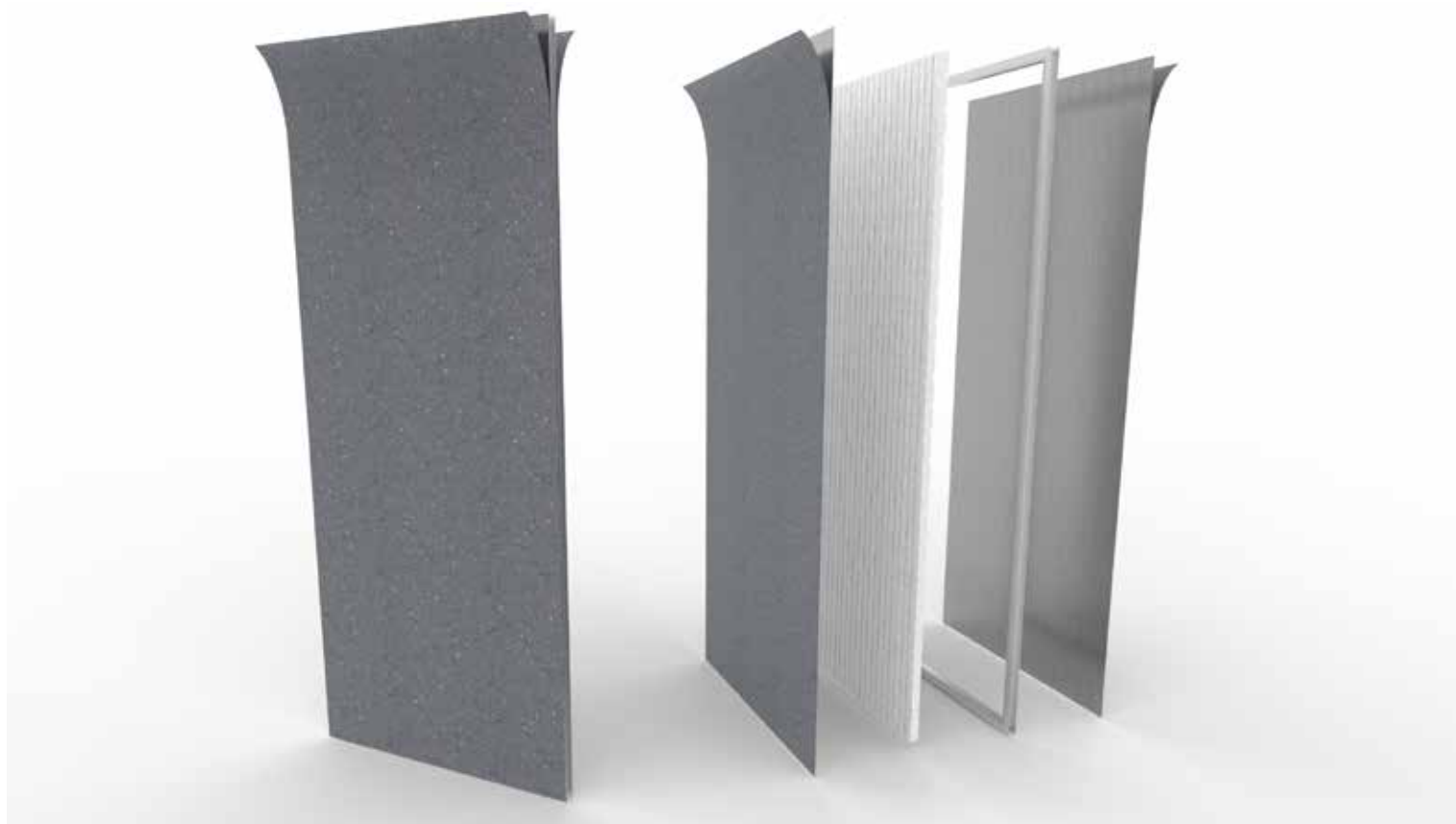
Panel joining detail

- 1. Raw aluminum panel
- 2. Caulked with silicone 4 mm
- 3. Aluminum connection profile



Removable panel detail

- 1. Raw aluminum panel
- 2. Caulked with silicone 4 mm
- 3. Gasket
- 4. Aluminum connection profile for removable panel

**MODULAR PANEL**

Reaction to fire	NPD
Soundproof (dB)	NPD
Weight (kg/m <sup>2</sup> )	18,40
Manufacturing time with standard colors: 4/5 weeks from shop drawings	

**EXTERNAL COATING WITH RAW ALUMINUM**

Thickness (mm)	2 mm
Reaction to fire	Class A1
Gloss	NPD
Corrosion resistance	NPD
Humidity resistance	NPD
Resistance to acids/solvents/mineral oils	NPD
Standard colors	Raw aluminum

**INTERNAL FRAME**

Aluminium C extruded profile th. 2 mm, with double reinforcement, cut to 45°, assembled with square for fixing

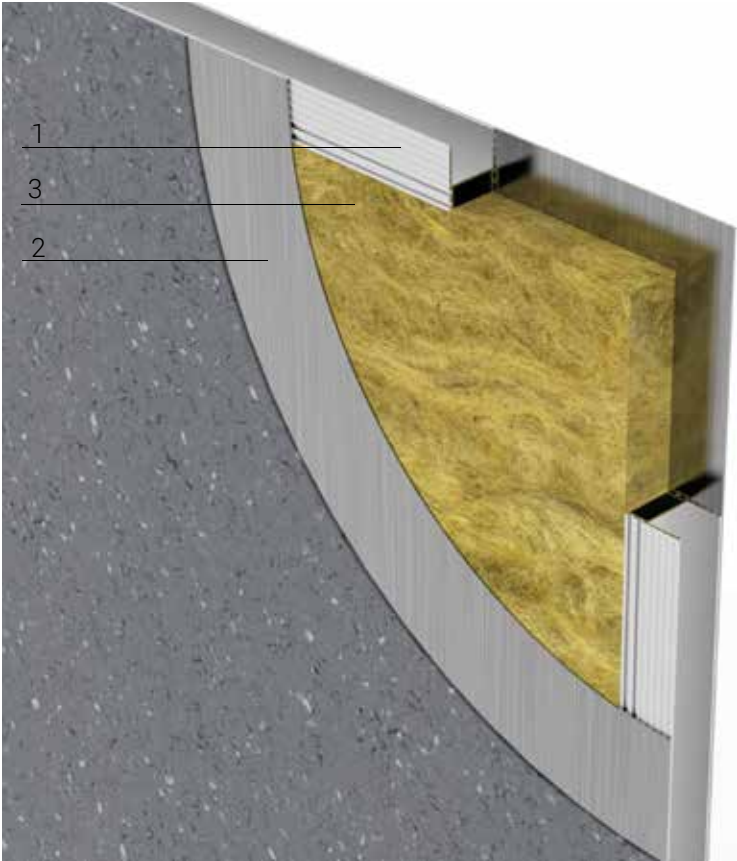
**INSULATING**

Polystyrene	Flexural strength	KPa > 250
Thickness (mm)	45	
Reaction to fire	Class E	EN 13501-1
Thermal conductivity $\lambda_D$ (W/mk)	0,033	EN 12667

1.4.2. Raw aluminum panel to cover by PVC

Internal insulation **Rock wool**

art. cod. W-ALLGRRW



Description

1. Internal extruded aluminum frame thickness 2 mm
2. External coating by raw aluminum (th. 20/10 )
3. Internal insulation **Rock wool**

Thickness  
48 mm



Maximum sizes  
Width 1240 mm, Height 2990 mm



Minimum sizes  
Width 90 mm, Height 90 mm



Finishing

Raw aluminum



Panel operating  
temperature

Without a prescription



Relative operating  
humidity of the panel

Without a prescription



Insulating density

120 Kg/m<sup>3</sup>



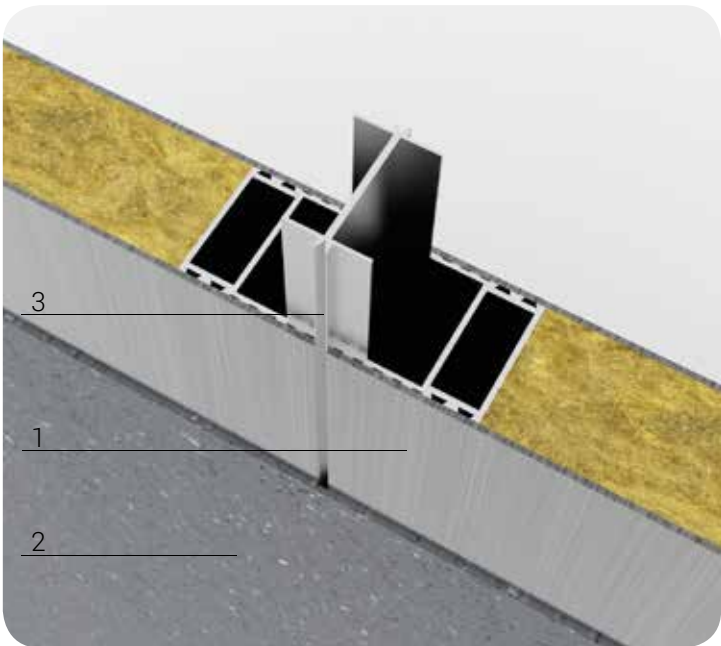
Thermal conductivity  $\lambda_D$   
Insulating

0,044 W/m<sup>2</sup>K



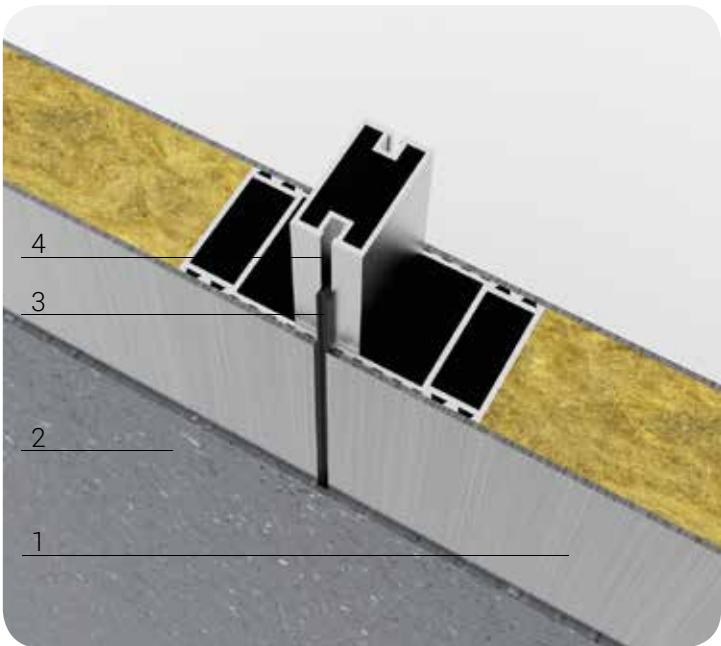
Insulating reaction  
to fire

Class A1



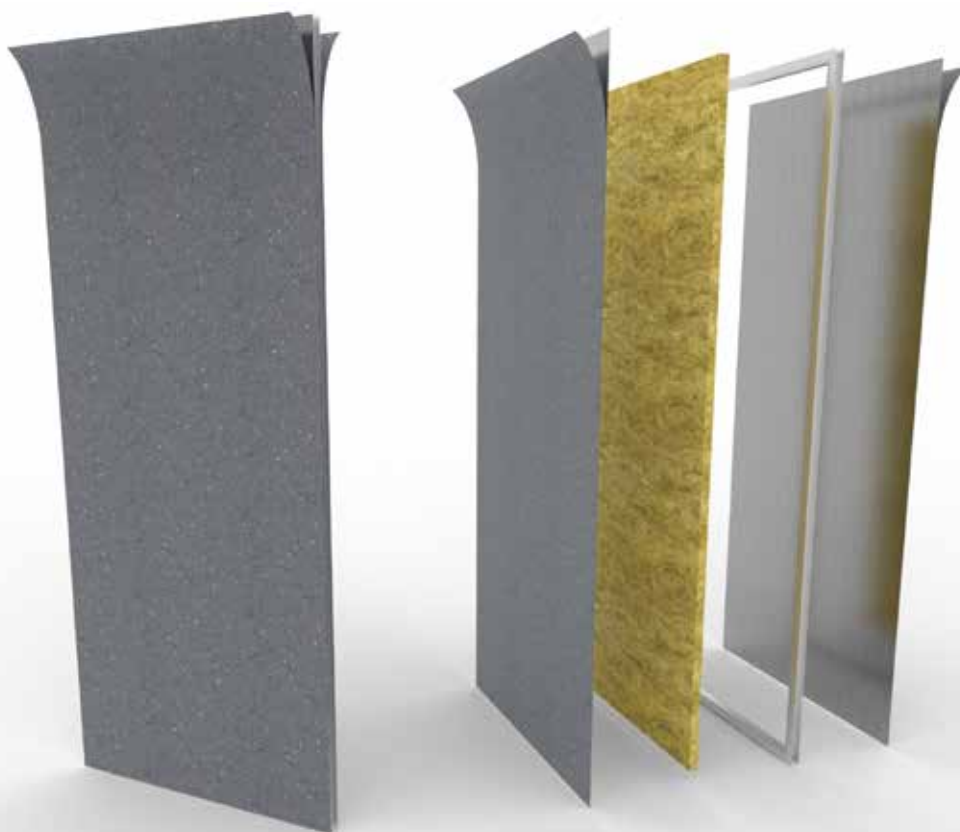
Panel joining detail

1. Raw aluminum panel
2. Caulked with silicone 4 mm
3. Aluminum connection profile



Removable panel detail

1. Raw aluminum panel
2. Caulked with silicone 4 mm
3. Gasket
4. Aluminum connection profile for removable panel

**MODULAR PANEL**

Reaction to fire	Class A2,s1-d0
Soundproof (dB)	NPD
Weight (kg/m <sup>2</sup> )	22,56
Manufacturing time with standard colors: 4/5 weeks from shop drawings	

**EXTERNAL COATING WITH RAW ALUMINUM**

Thickness (mm)	2 mm
Reaction to fire	Class A1
Gloss	NPD
Corrosion resistance	NPD
Humidity resistance	NPD
Resistance to acids/solvents/mineral oils	NPD
Standard colors	Raw aluminum

**INTERNAL FRAME**

Aluminium C extruded profile th. 2 mm, with double reinforcement, cut to 45°, assembled with square for fixing

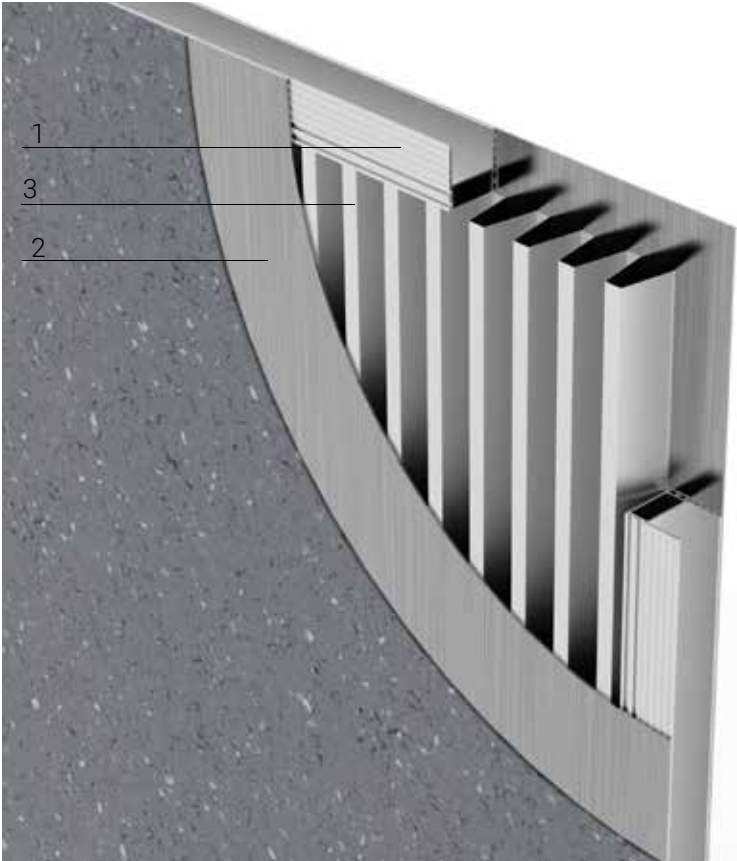
**INSULATING**

Rock wool	Density	120 Kg/m <sup>3</sup>
Thickness (mm)	45	
Reaction to fire	Class A1	EN 13501-1
Thermal conductivity $\lambda_D$ (W/mk)	0,044	EN 12667

1.4.3. Raw aluminum panel to cover by PVC

Internal insulation **Honeycomb**

art. cod. W-ALLGRHC



Description

1. Internal extruded aluminum frame thickness 2 mm
2. External coating by raw aluminum (th. 20/10 )
3. Internal insulation **Honeycomb**

Thickness  
48 mm



Maximum sizes  
Width 1240 mm, Height 2990 mm



Minimum sizes  
Width 90 mm, Height 90 mm



Finishing

Raw aluminum



Panel operating  
temperature

Without a prescription



Relative operating  
humidity of the panel

Without a prescription



Insulating density

116 Kg/m<sup>3</sup>



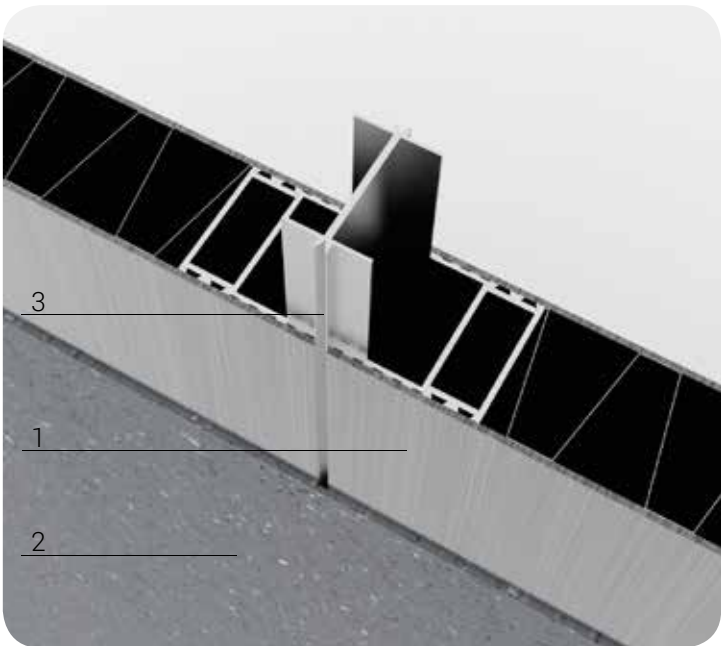
Thermal conductivity  $\lambda_D$   
Insulating

NPD



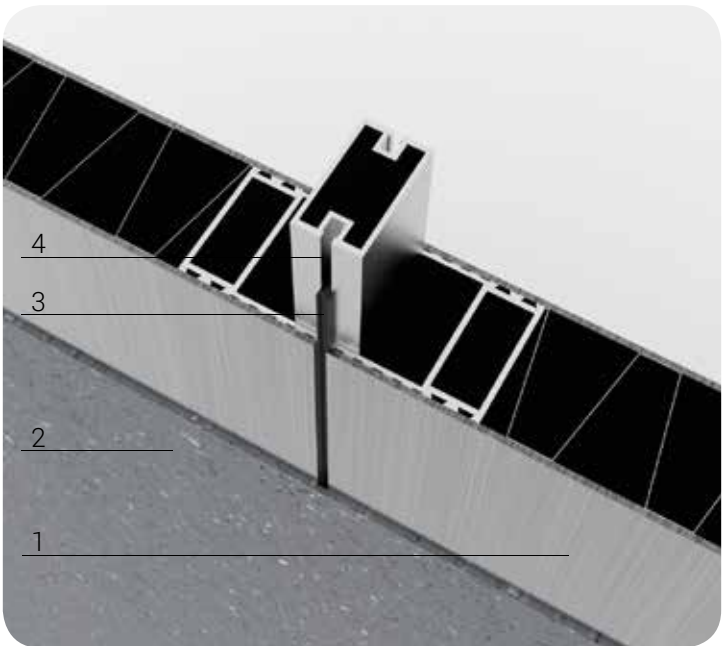
Insulating reaction  
to fire

Class A1



Panel joining detail

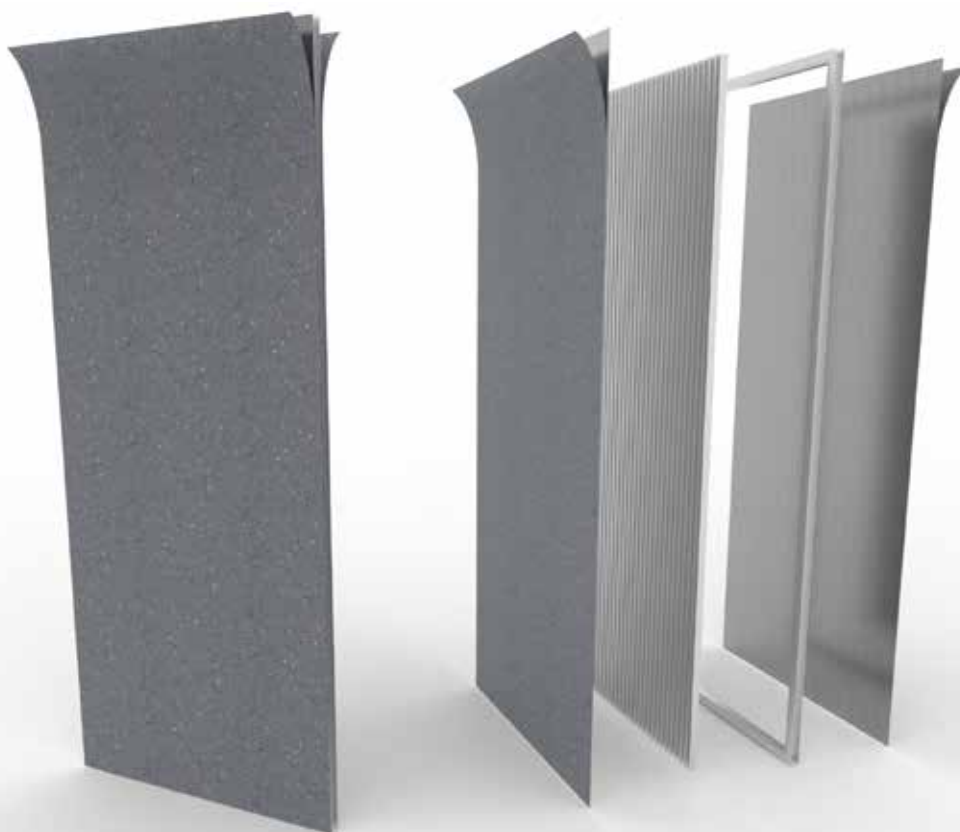
1. Raw aluminum panel
2. Caulked with silicone 4 mm
3. Aluminum connection profile



Removable panel detail

1. Raw aluminum panel
2. Caulked with silicone 4 mm
3. Gasket
4. Aluminum connection profile for removable panel



**MODULAR PANEL**

Reaction to fire	Class A2,s1-d0
Soundproof (dB)	NPD
Weight (kg/m <sup>2</sup> )	20,75
Manufacturing time with standard colors: 4/5 weeks from shop drawings	

**EXTERNAL COATING WITH RAW ALUMINUM**

Thickness (mm)	2 mm
Reaction to fire	Class A1
Gloss	NPD
Corrosion resistance	NPD
Humidity resistance	NPD
Resistance to acids/solvents/mineral oils	NPD
Standard colors	Raw aluminum

**INTERNAL FRAME**

Aluminium C extruded profile th. 2 mm, with double reinforcement, cut to 45°, assembled with square for fixing

**INSULATING**

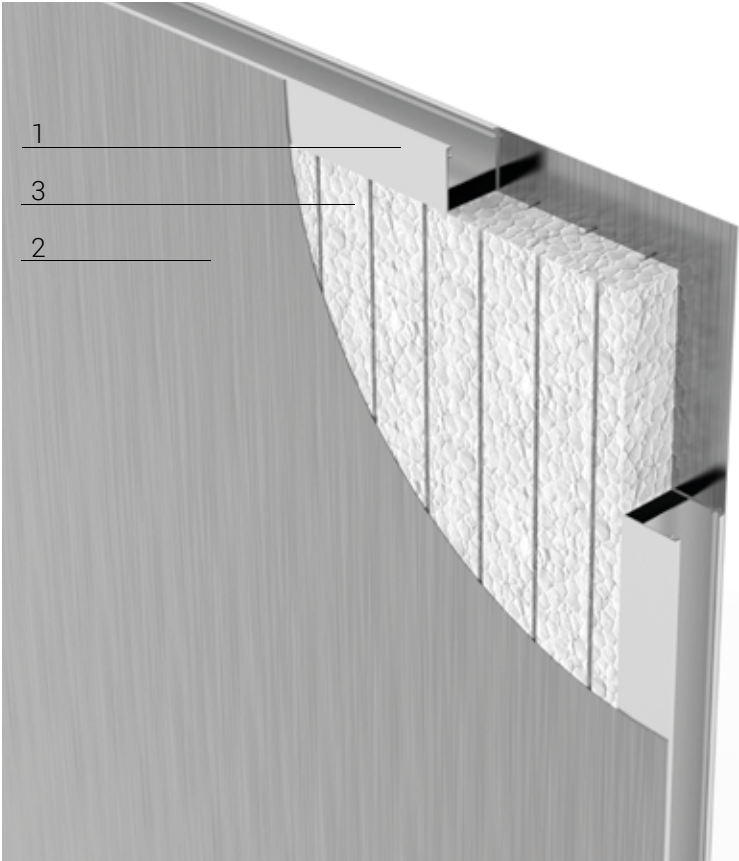
Honeycomb	Density	116 Kg/m <sup>3</sup>
Thickness (mm)	45	
Reaction to fire	Class A1	EN 13501-1
Thermal conductivity $\lambda_D$ (W/mk)	NPD	



1.5.1.    Stainless steel panel

Internal insulation **Polystyrene**

art. cod. W-INOP0



Description

- 1. Internal extruded aluminum frame thickness 2 mm
- 2. External coating by stainless steel AISI 304 scotch-brite (th. 8/10)
- 3. Internal insulation **polystyrene**

Thickness  
48 mm



Maximum sizes  
Width 1250 mm, Height 2990 mm



Minimum sizes  
Width 90 mm, Height 90 mm



Finishing  
Scotch-brite



Panel operating temperature

Without a prescription



Relative operating humidity of the panel

Without a prescription



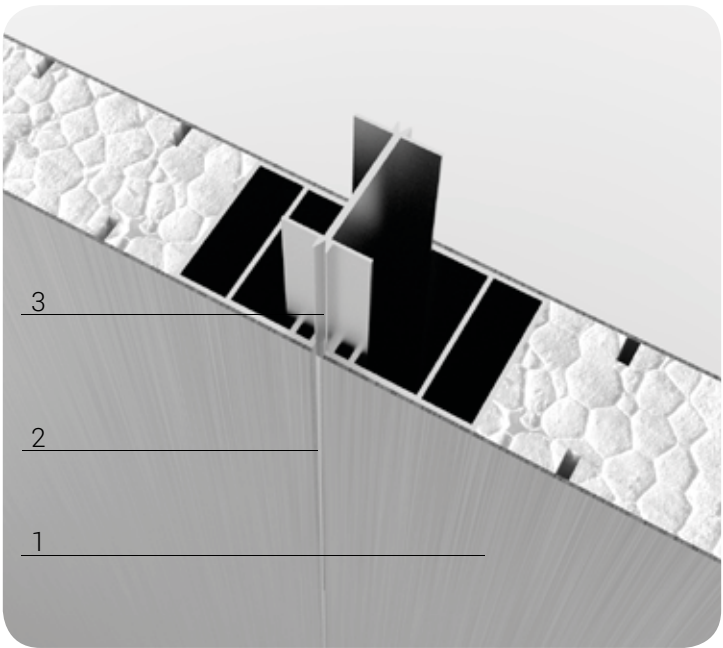
Insulating flexural strength  
Kpa > 250



Thermal conductivity  $\lambda_D$   
Insulating  
0,033 W/m²K

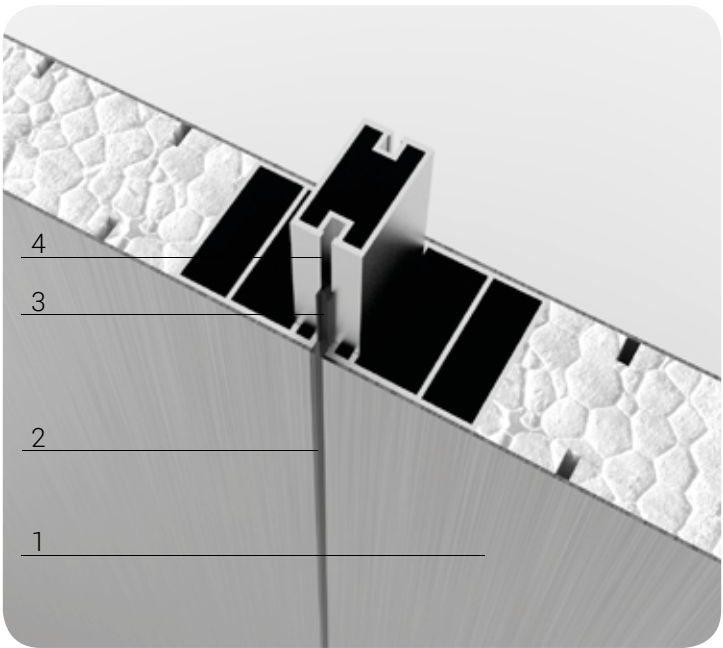


Insulating reaction to fire  
Class E



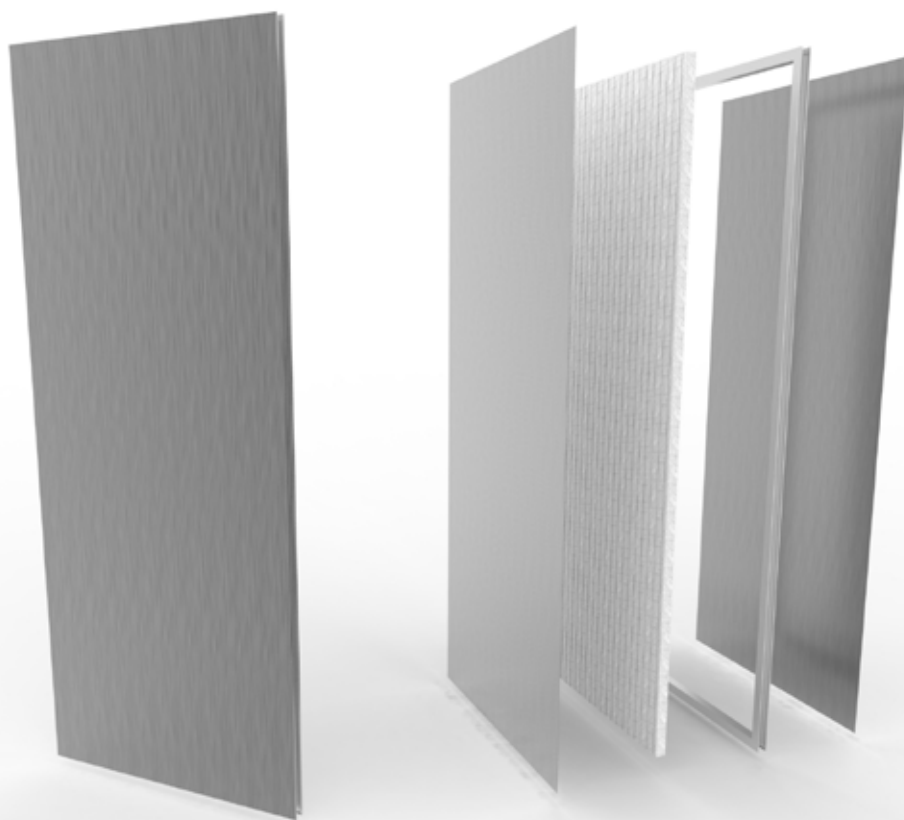
Panel joining detail

- 1. Stainless steel panel
- 2. Caulked with silicone 4 mm
- 3. Aluminum connection profile



Removable panel detail

- 1. Stainless steel panel
- 2. Caulked with silicone 4 mm
- 3. Gasket
- 4. Aluminum connection profile for removable panel

**MODULAR PANEL**

Reaction to fire	NPD
Soundproof (dB)	NPD
Weight (kg/m <sup>2</sup> )	15,30

Manufacturing time with standard colors: 4/5 weeks from shop drawings

**EXTERNAL COATING WITH STAINLESS STEEL**

Thickness (mm)	0.8 mm
Reaction to fire	Class 0
Gloss	NPD
Corrosion resistance	NPD
Humidity resistance	NPD
Resistance to acids/solvents/mineral oils	NPD
Standard colors	AISI 304 scotch-brite

**INTERNAL FRAME**

Aluminium C extruded profile th. 2 mm, with double reinforcement, cut to 45°, assembled with square for fixing

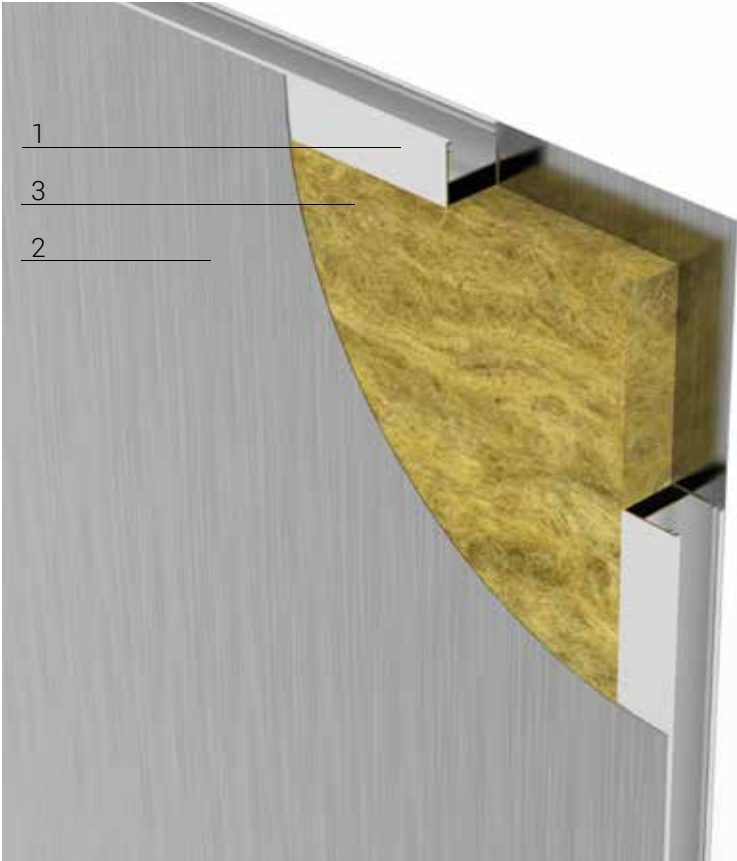
**INSULATING**

Polystyrene	Flexural strength	KPa > 250
Thickness (mm)	45	
Reaction to fire	Class E	EN 13501-1
Thermal conductivity $\lambda_D$ (W/mk)	0,033	EN 12667

1.5.2.     Stainless steel panel

Internal insulation **Rock wool**

art. cod. W-INORW



Description

- 1. Internal extruded aluminum frame thickness 2 mm
- 2. External coating by stainless steel AISI 304 scotch-brite (th. 8/10)
- 3. Insulation **Rock wool**

Thickness  
48 mm



Maximum sizes  
Width 1250 mm, Height 2990 mm



Minimum sizes  
Width 90 mm, Height 90 mm



Finishing  
Scotch-brite



Panel operating  
temperature

Without a prescription



Relative operating  
humidity of the panel

Without a prescription



Insulating density

120 Kg/m³



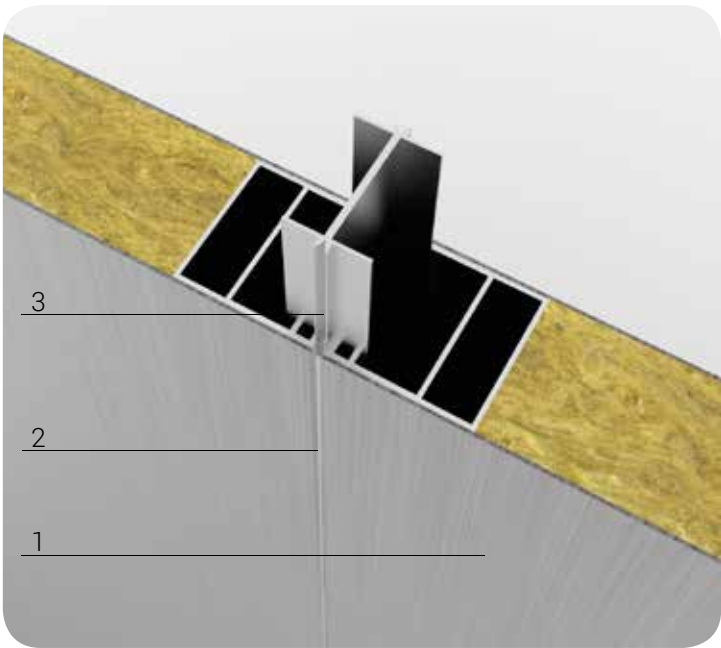
Thermal conductivity  $\lambda_D$   
Insulating

0,044 W/m²K



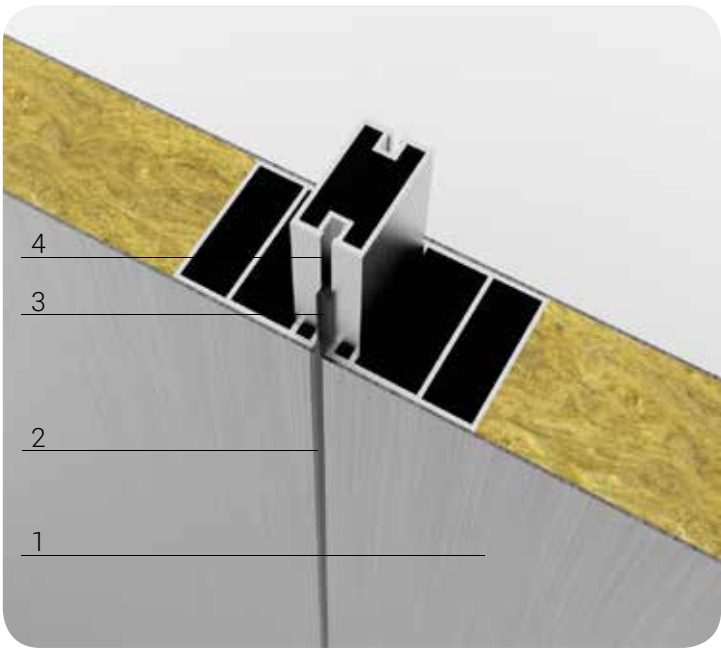
Insulating reaction  
to fire

Class A1



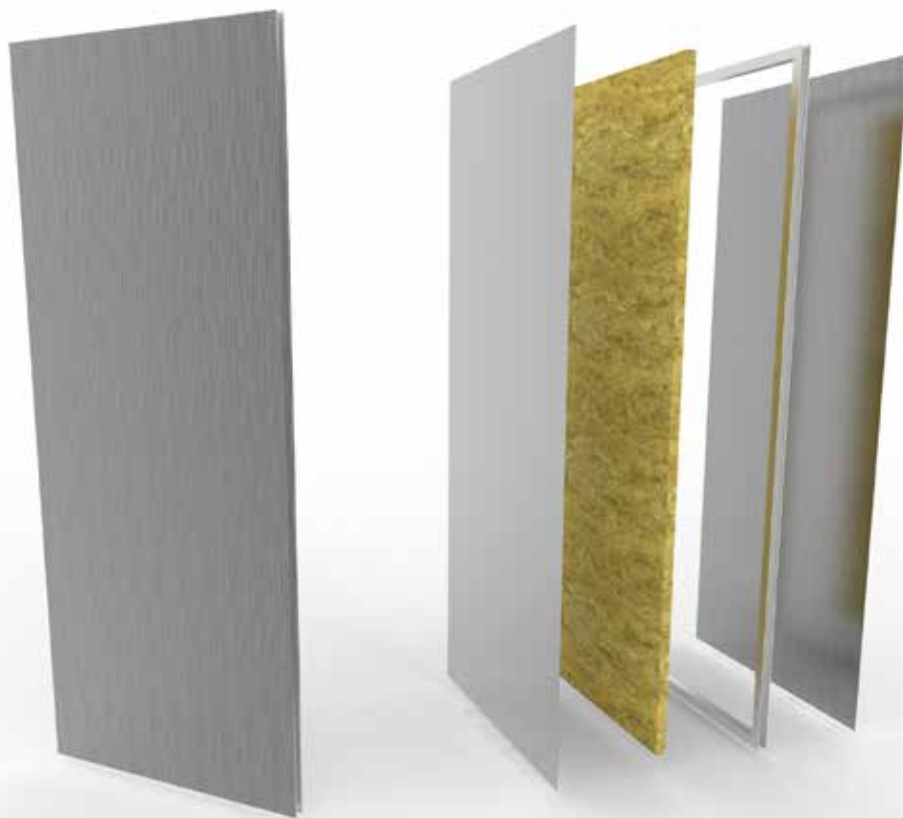
Panel joining detail

- 1. Stainless steel panel
- 2. Caulked with silicone 4 mm
- 3. Aluminum connection profile



Removable panel detail

- 1. Stainless steel panel
- 2. Caulked with silicone 4 mm
- 3. Gasket
- 4. Aluminum connection profile for removable panel

**MODULAR PANEL**

Reaction to fire	NPD
Soundproof (dB)	NPD
Weight (kg/m <sup>2</sup> )	15,30

Manufacturing time with standard colors: 4/5 weeks from shop drawings

**EXTERNAL COATING WITH STAINLESS STEEL**

Thickness (mm)	0.8 mm
Reaction to fire	Class 0
Gloss	NPD
Corrosion resistance	NPD
Humidity resistance	NPD
Resistance to acids/solvents/mineral oils	NPD
Standard colors	AISI 304 scotch-brite

**INTERNAL FRAME**

Aluminium C extruded profile th. 2 mm, with double reinforcement, cut to 45°, assembled with square for fixing

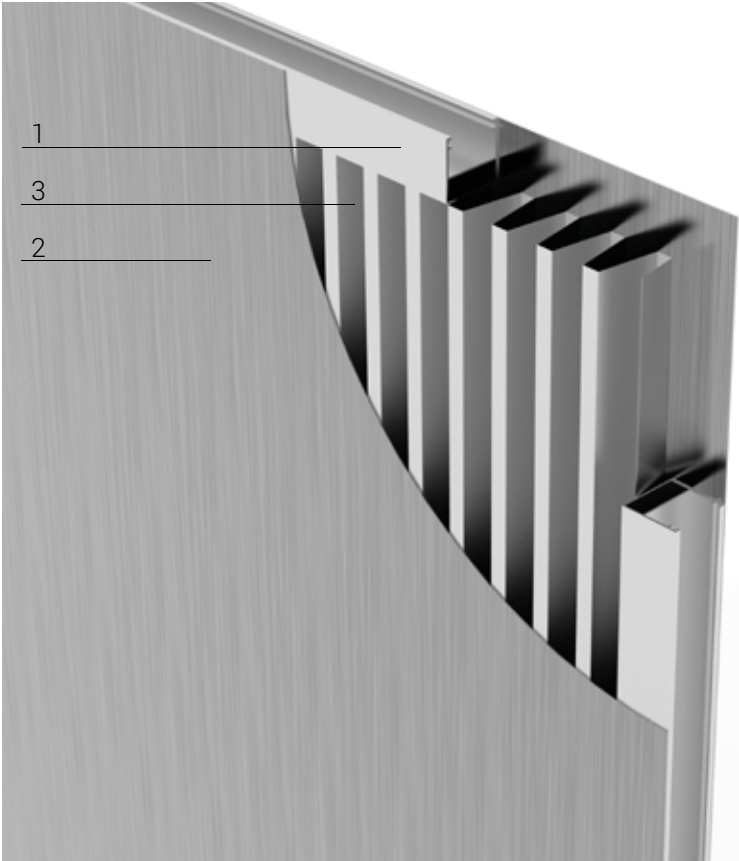
**INSULATING**

Rock wool	Density	120 Kg/m <sup>3</sup>
Thickness (mm)	45	
Reaction to fire	Class A1	EN 13501-1
Thermal conductivity $\lambda_D$ (W/mk)	0,044	EN 12667

1.5.3.      Stainless steel panel

Internal insulation **Honeycomb**

art. cod. W-INOHC



Description

- 1. Internal extruded aluminum frame thickness 2 mm
- 2. External coating by stainless steel AISI 304 scotch-brite (th. 8/10)
- 3. Internal insulation **Honeycomb**

Thickness  
48 mm

Maximum sizes  
Width 1250 mm, Height 2990 mm

Minimum sizes  
Width 90 mm, Height 90 mm

Finishing  
Scotch-brite



Panel operating temperature

Without a prescription



Relative operating humidity of the panel

Without a prescription



Insulating density

116 Kg/m³



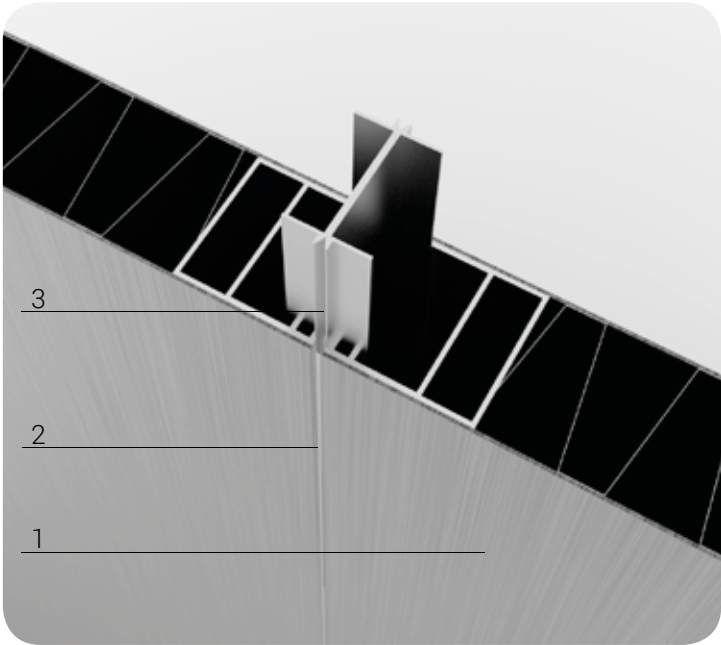
Thermal conductivity  $\lambda_D$

Insulating  
NPD



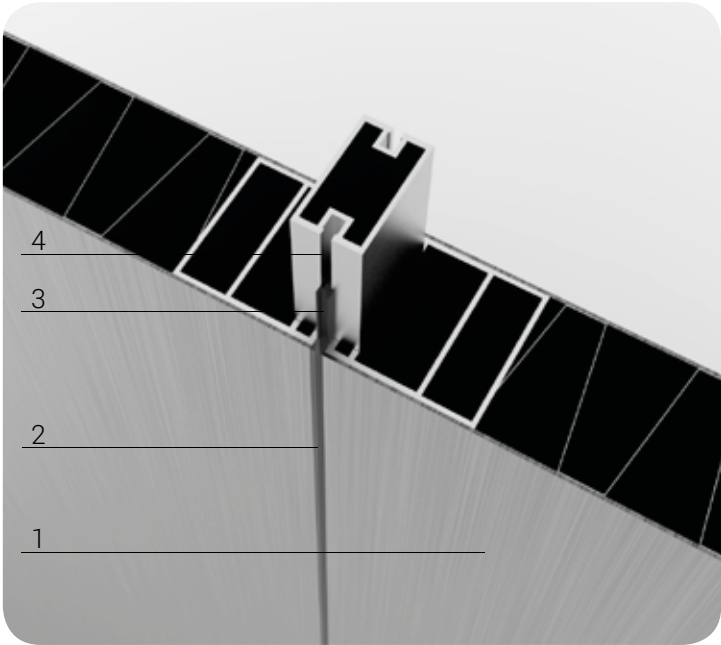
Insulating reaction to fire

Class A1



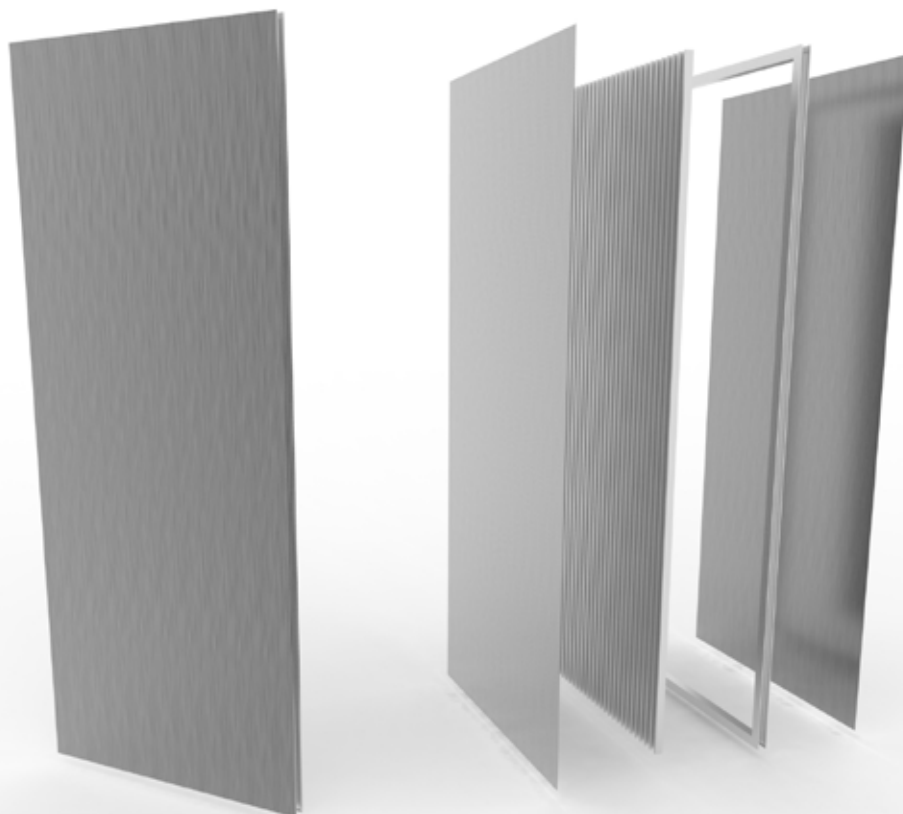
Panel joining detail

- 1. Stainless steel panel
- 2. Caulked with silicone 4 mm
- 3. Aluminum connection profile



Removable panel detail

- 1. Stainless steel panels
- 2. Caulked with silicone 4 mm
- 3. Gasket
- 4. Aluminum connection profile for removable panel

**MODULAR PANEL**

Reaction to fire	NPD
Soundproof (dB)	NPD
Weight (kg/m <sup>2</sup> )	15,30

Manufacturing time with standard colors: 4/5 weeks from shop drawings

**EXTERNAL COATING WITH STAINLESS STEEL**

Thickness (mm)	0.8 mm
Reaction to fire	Class 0
Gloss	NPD
Corrosion resistance	NPD
Humidity resistance	NPD
Resistance to acids/solvents/mineral oils	NPD
Standard colors	AISI 304 scotch-brite

**INTERNAL FRAME**

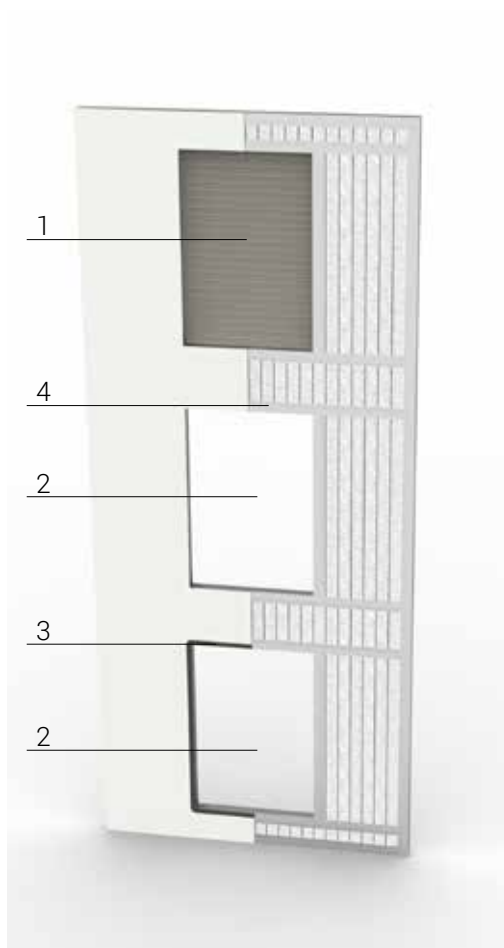
Aluminium C extruded profile th. 2 mm, with double reinforcement, cut to 45°, assembled with square for fixing

**INSULATING**

Honeycomb	Density	116 Kg/m <sup>3</sup>
Thickness (mm)	45	
Reaction to fire	Class A1	EN 13501-1
Thermal conductivity $\lambda_D$ (W/mk)	NPD	



## 1.6.1. Walls accessories - Processing on the panels



Quarry



Hole



Milled hole

### Description

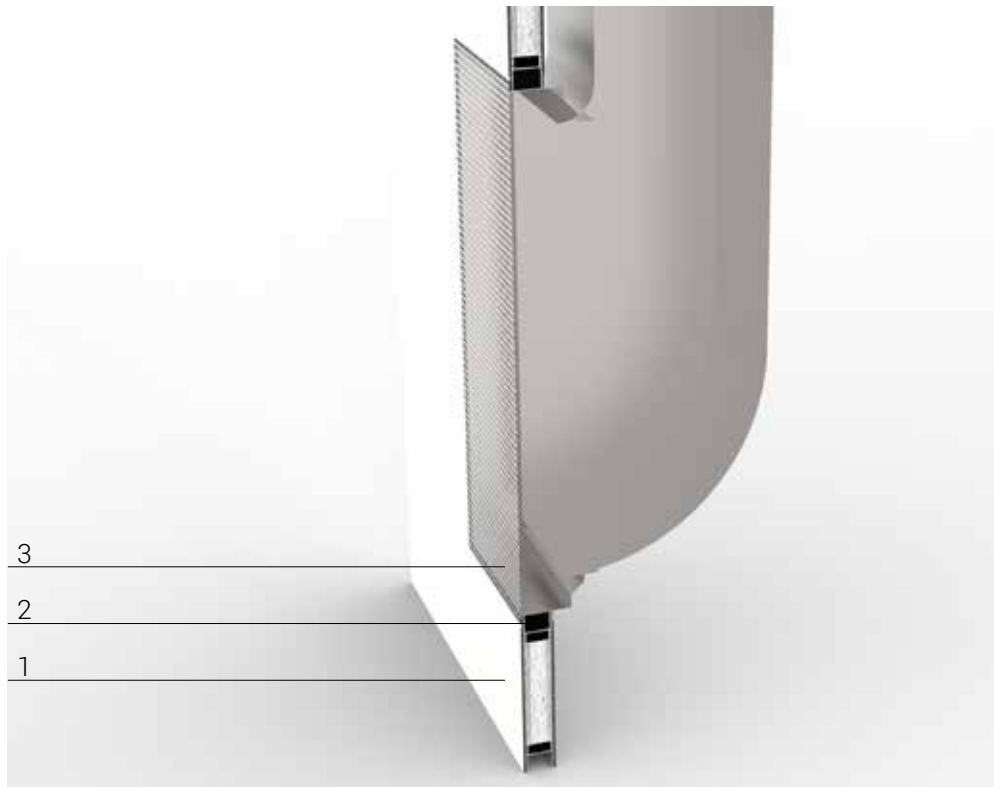
1. Quarry type wall processing
2. Hole type wall processing
3. Milled hole type wall processing
4. Panel reinforcement

## 1.6.2 Walls accessories - Predisposition for electrical system



### Description

1. PVC conduit Ø 32 mm
2. Electrical box 503-504



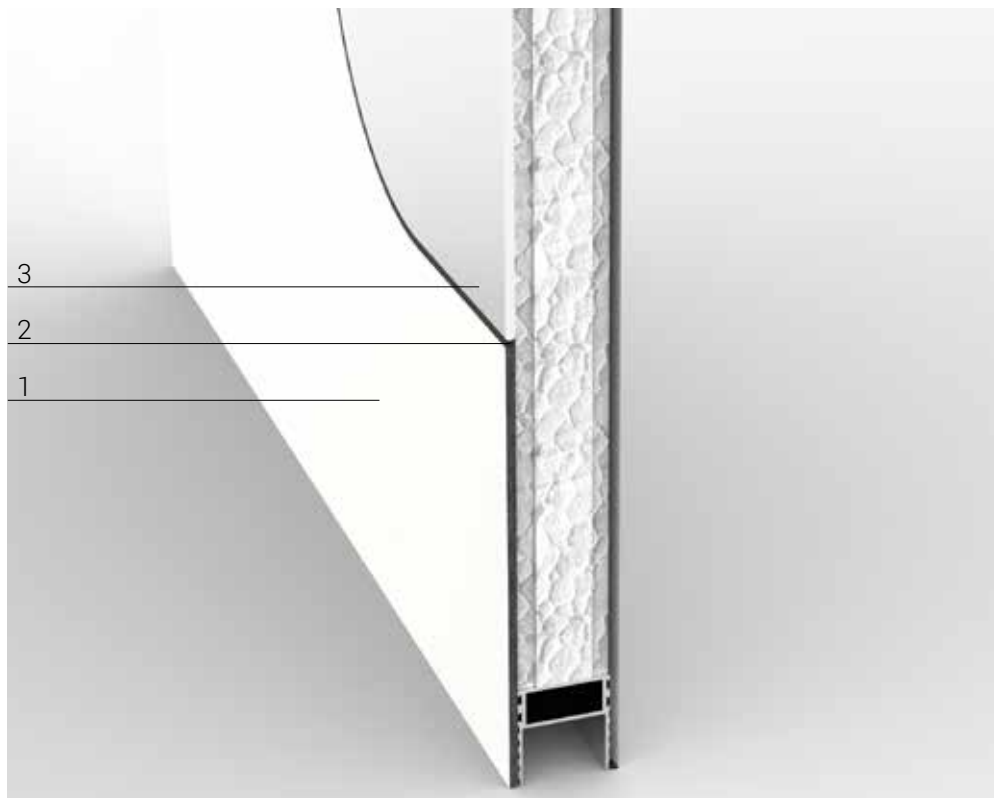
## Description

1. Walls panel
2. Panel reinforcement to fix the grid
3. Caulked with silicone



## Walls accessories - Mirror

## 1.6.4



## Description

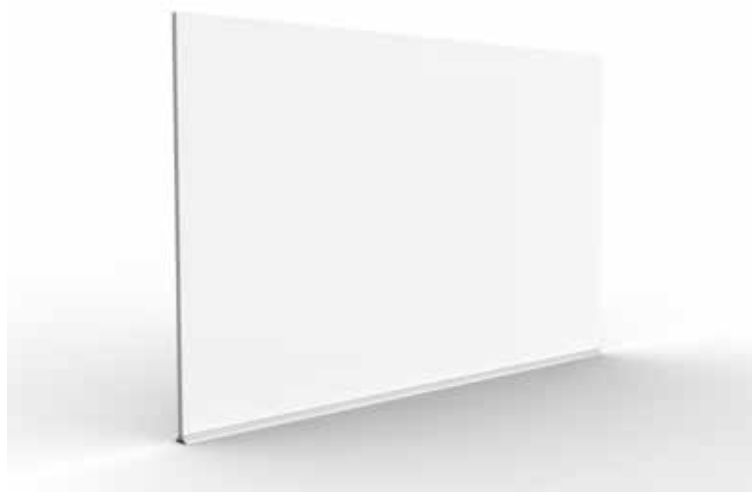
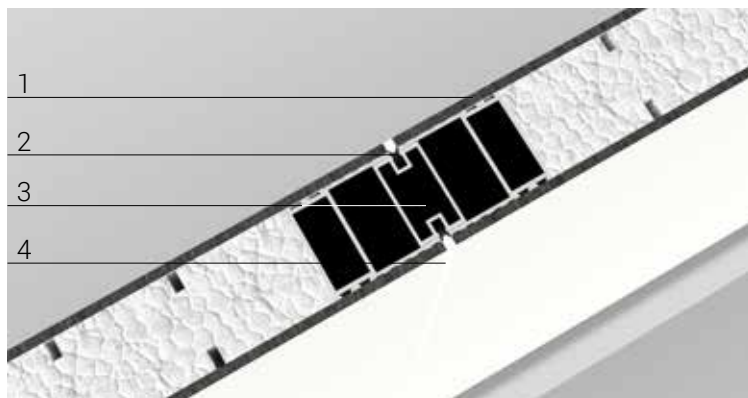
1. Wall panel
2. Caulked with silicone
3. Mirror



## 1.7.1 Removable panel with internal profile

### Description

1. Wall panel
2. Gasket
3. Aluminum connection profile for removable panel
4. Caulked with silicone 4 mm



## 1.7.2 Removable panel with external profile

### Description

1. Wall panel
2. H profile

